

LAIC Spec Building - 489 SE 12th Street - Lakeview Industrial Park



The 16,000 sq. ft. building is newly constructed in the Lakeview Industrial Park inside the city limits of Madison, South Dakota.

- Located on 5.32 acres
- 80 x 200 sq. ft. with an open layout
- 20 ft. sidewalls
- Two loading docks with lifts and docks
- Optional 14x14 ft. overhead door
- 3 phase power, 400 amp service with conduit for 1,000 amp service.
- Sprinkler/Fire alarm system
- Have not poured concrete floor – waiting for tenant to determine needs
- Design interior to fit your business layout

Tenant has the flexibility to design the interior to fit their needs.

Location:

489 SE 12th Street
Madison, South Dakota 57042

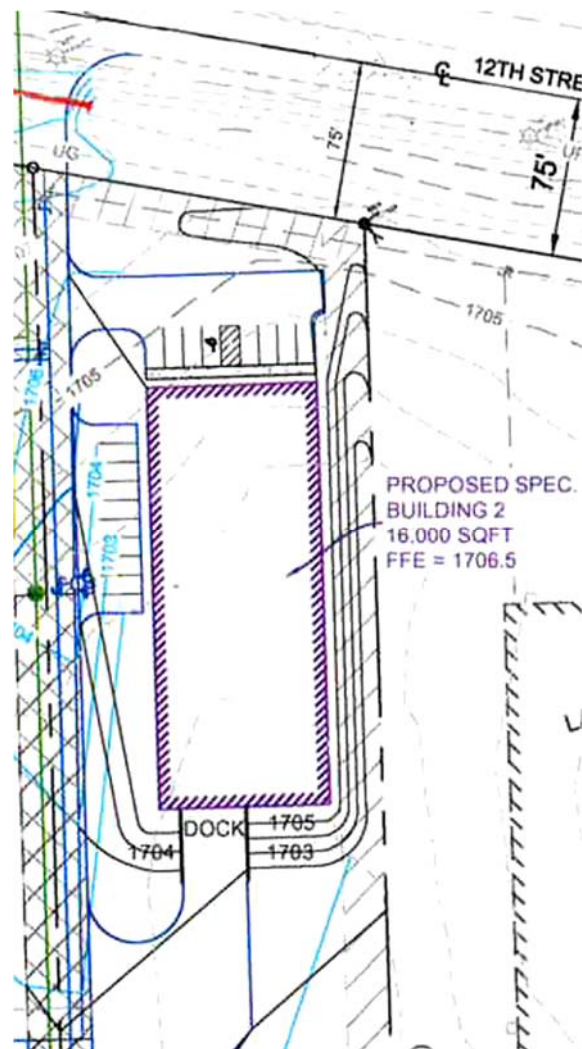
Utilities:

Water & Electricity – City of Madison
Natural Gas – Northwestern Energy
Telecommunications – To Be Determined

Zoning:

Light Manufacturing District

Lease or Purchase: Available now!



Preliminary drawing of building. More detailed information is available.