



**Lake County, Madison, South Dakota  
Jail / Public Safety Building  
Needs Assessment**

2018 January 15

- What's being heard on the streets?
- Quick Review
  - Inmate Projections (60-beds expandable to 72-beds)
  - Facility Assessment
    - ACA (American Correctional Association) Performance Based Standards for Adult Local Detention Facilities, Fourth Edition
    - 2012 IBC (International Building Code)
    - ADA (American with Disabilities Act)
- Question to be answered: How can the Public Safety Building (PSB) continue to be used?
  - Expand / Remodel to accommodate current occupants; Law Enforcement (Sheriff), Jail, 911 / Communications, State's Attorney, Emergency Management Training / Disaster Operations Center future needs.
    - Area available (need for variance to encroach of R.O.W.).
    - Impact on existing geo-thermal well field.
  - Remodel for future needs of; 911 / Communications, State's Attorney, Emergency Management Training / Disaster Operations Center.
    - New Jail and Law Enforcement (Sheriff & P.D.?) on a TBD Site.
- Option diagrams
  - Expand / Remodel
    - Option #1: North and East of PSB
    - Option #2: North and West of PSB
  - New/Remodel
    - Option #3: New Jail only, on northwest corner of courthouse square.
    - Option #4: New Jail and Law Enforcement on a TBD Site.
- Schedule
- Other

# Options

## Lake County, Madison, South Dakota Jail / Public Safety Building Needs Assessment

### Option 1

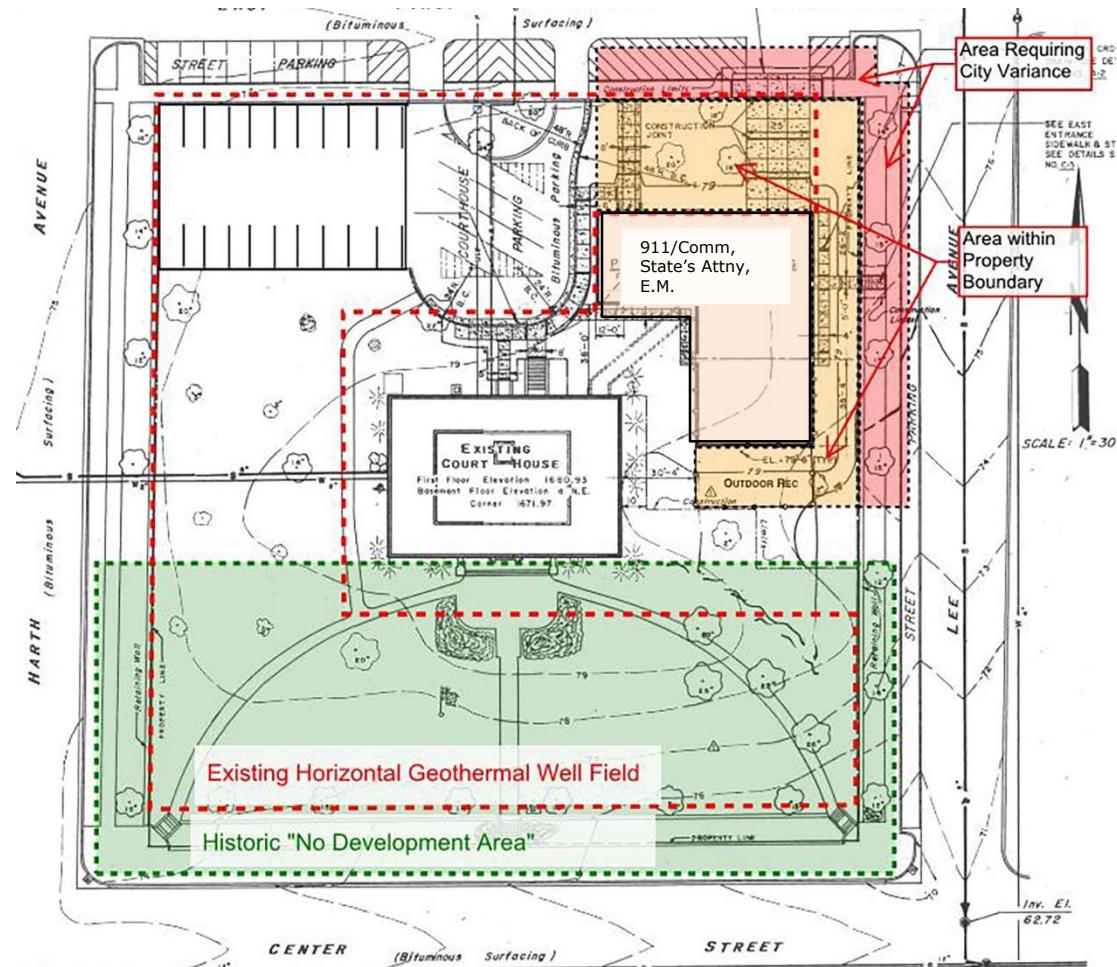
Jail Addition –  
North and East of  
PSB

Addition:  
Two Story Mezzanine  
Housing & Jail  
Support

Total New  
Construction:  
21,175 sf  
Total Remodel:  
8,940 sf  
Program Requires:  
30,117 sf

Median Project Cost  
Est.

\$12.48 million



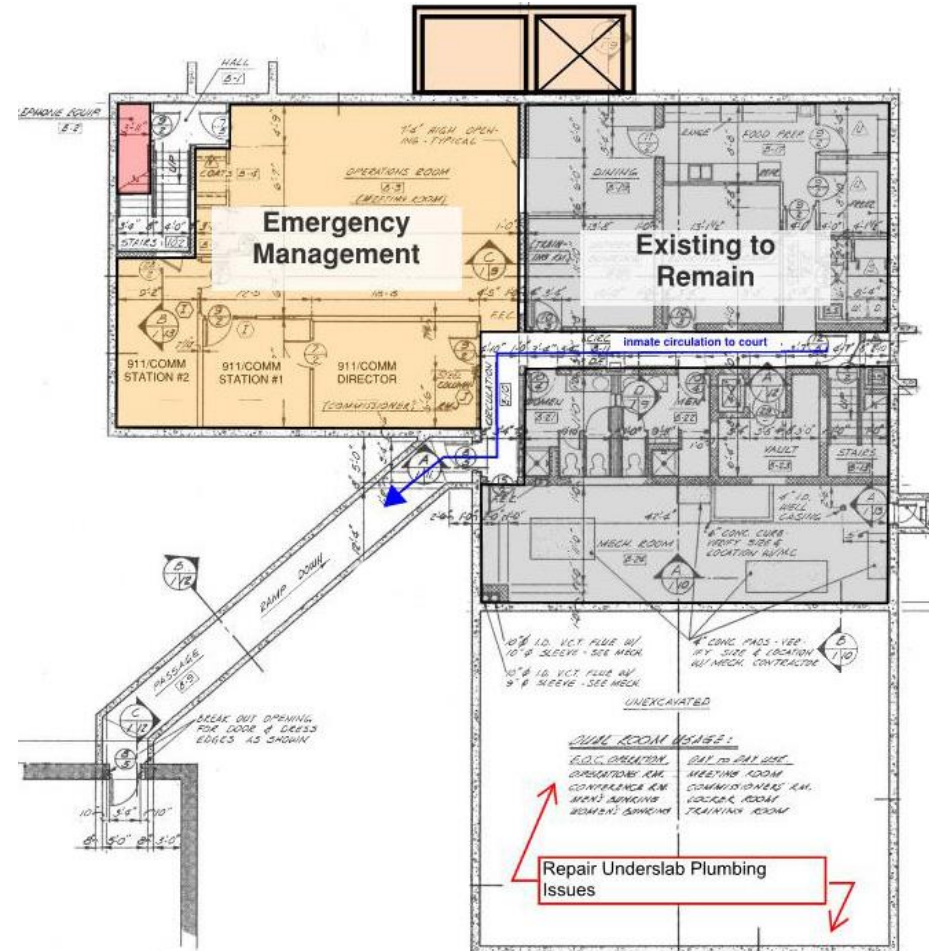
# Options

## Lake County, Madison, South Dakota Jail / Public Safety Building Needs Assessment

Option 1  
Jail Addition –  
North and East of  
PSB

New:  
Elevator and Stair

Remodel:  
Emergency  
Management





# Options

## Lake County, Madison, South Dakota Jail / Public Safety Building Needs Assessment

### Option 1 Jail Addition – North and East of PSB

#### First Floor

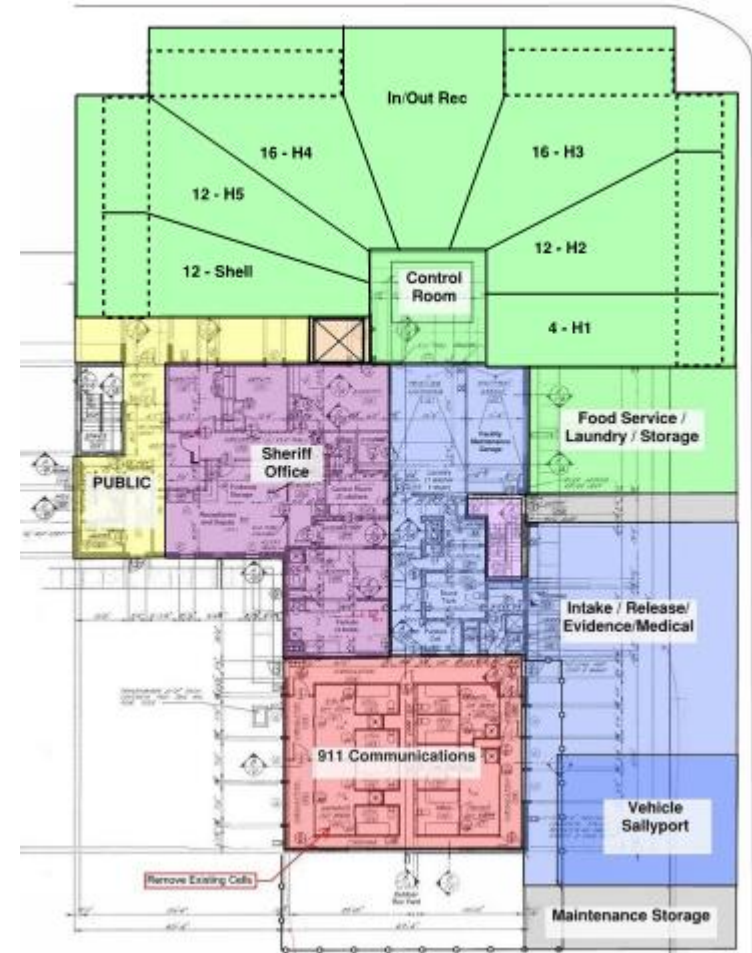
#### New:

Jail Housing, Jail  
Support, Elev. & Stair,  
2/3

Intake/Release/Evid/  
Med and  
Maintenance

#### Remodel:

Public, Sheriff, 1/3  
Intake/Release/Evid/  
Med and 911  
Communications



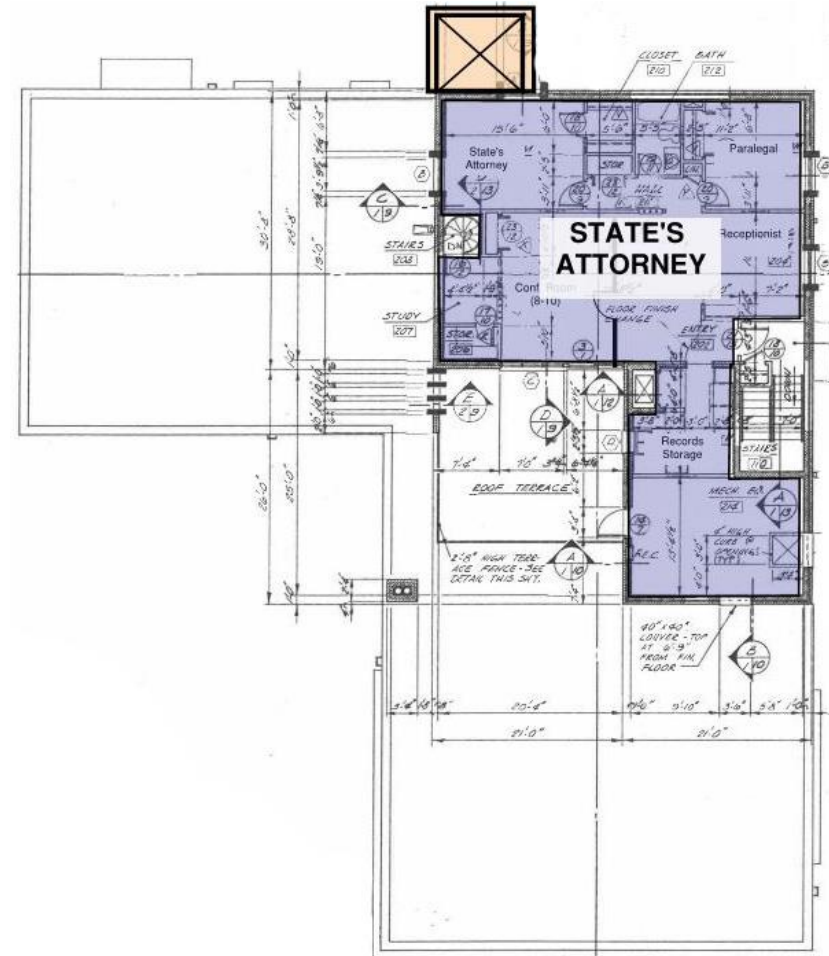
# Options

## Lake County, Madison, South Dakota Jail / Public Safety Building Needs Assessment

**Option 1**  
Jail Addition –  
North and East of  
PSB

Second Floor  
New:  
Elevator & Stair

Remodel:  
States Attorney



# Options

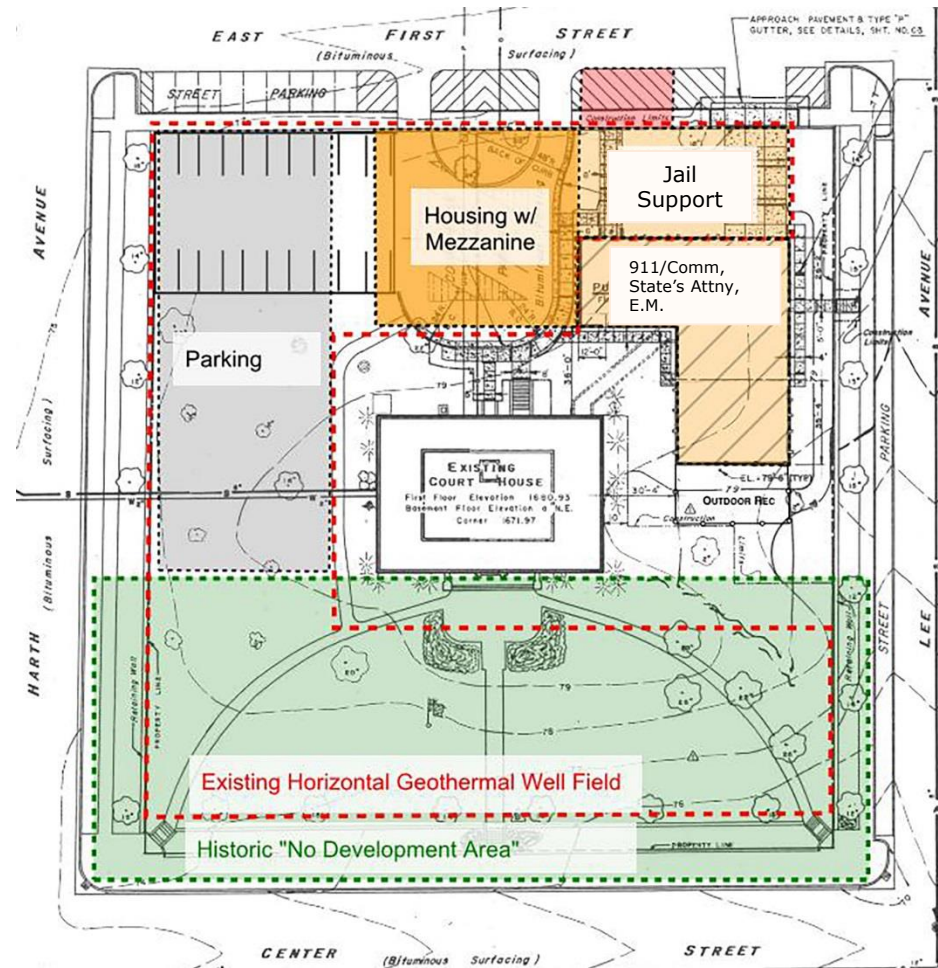
## Lake County, Madison, South Dakota Jail / Public Safety Building Needs Assessment

**Option 2**  
Jail Addition –  
North and West of PSB

**Addition:**  
Two Story Mezzanine  
Housing & Jail Support

**Total New  
Construction:**  
21,175 sf  
**Total Remodel:**  
8,940 sf  
**Program Requires:**  
30,117 sf

**Median Project Cost  
Est.**  
**\$12.28 million**



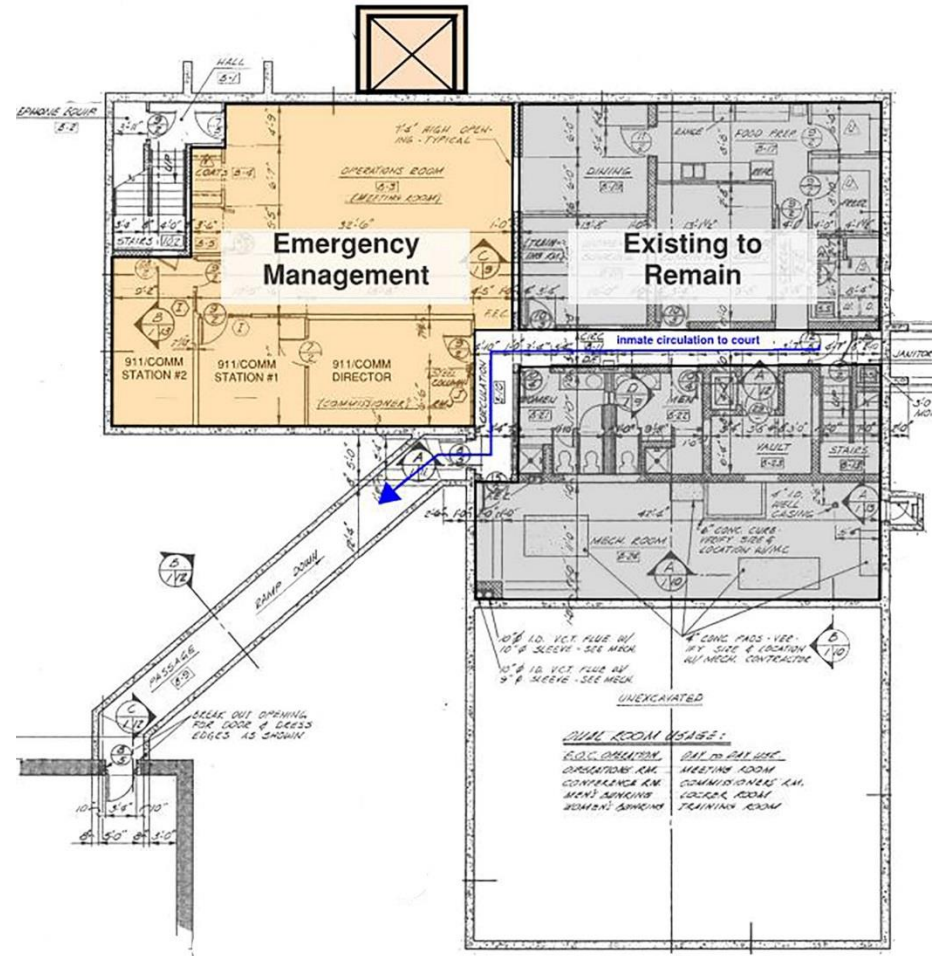
# Options

## Lake County, Madison, South Dakota Jail / Public Safety Building Needs Assessment

Option 2  
Jail Addition –  
North and West of  
PSB

New:  
Elevator and Stair

Remodel:  
Emergency  
Management





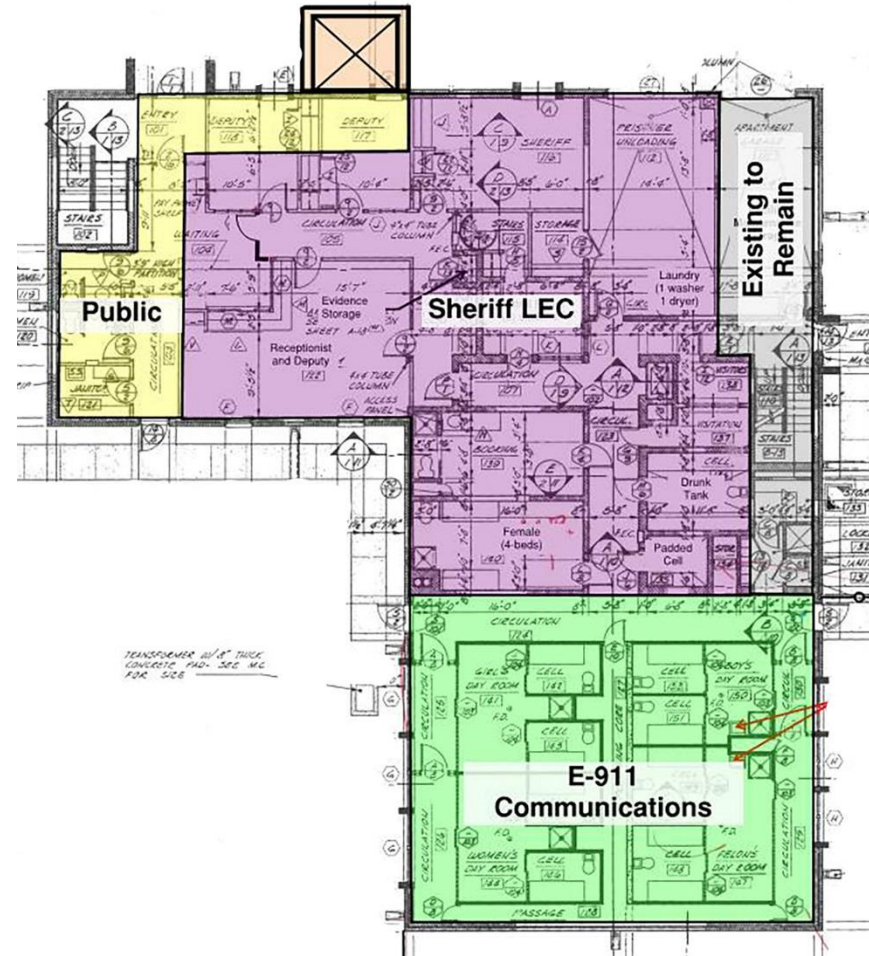
# Options

## Lake County, Madison, South Dakota Jail / Public Safety Building Needs Assessment

**Option 2**  
Jail Addition –  
North and West of  
PSB

First Floor  
New:  
Jail Housing, Jail  
Support, Elev. & Stair,  
Intake/Release/Evid/  
Med

Remodel:  
Public, Sheriff &  
911/Communications



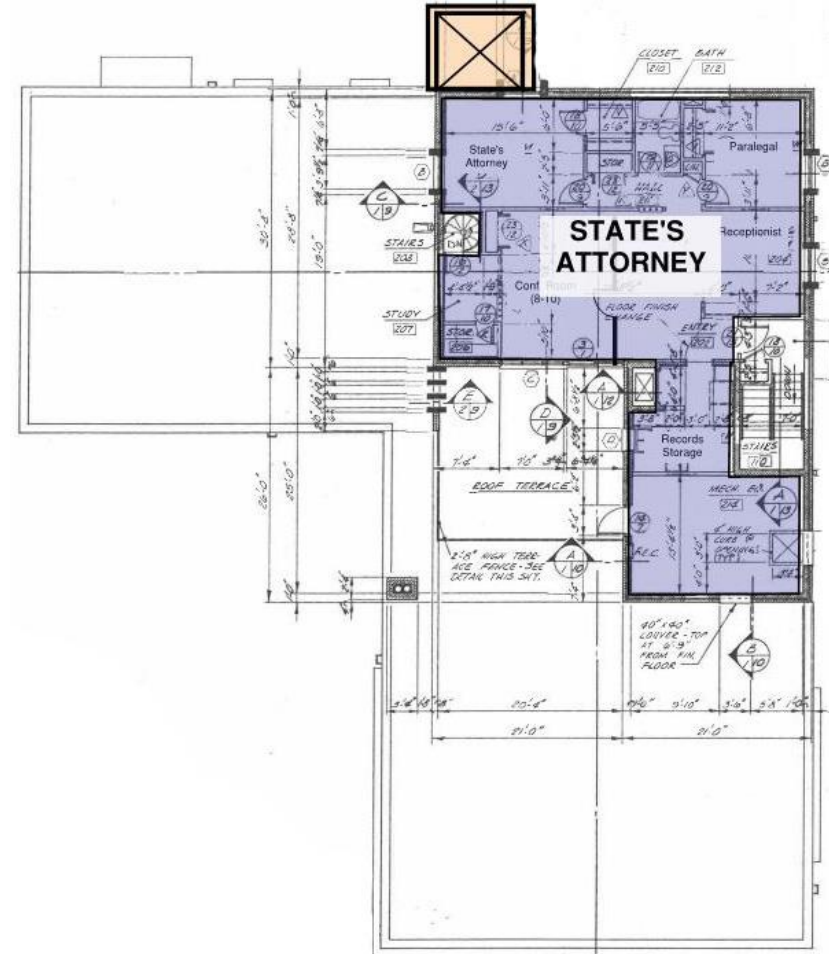
# Options

## Lake County, Madison, South Dakota Jail / Public Safety Building Needs Assessment

Option 2  
Jail Addition –  
North and West of  
PSB

Second Floor  
New:  
Elevator & Stair

Remodel:  
States Attorney



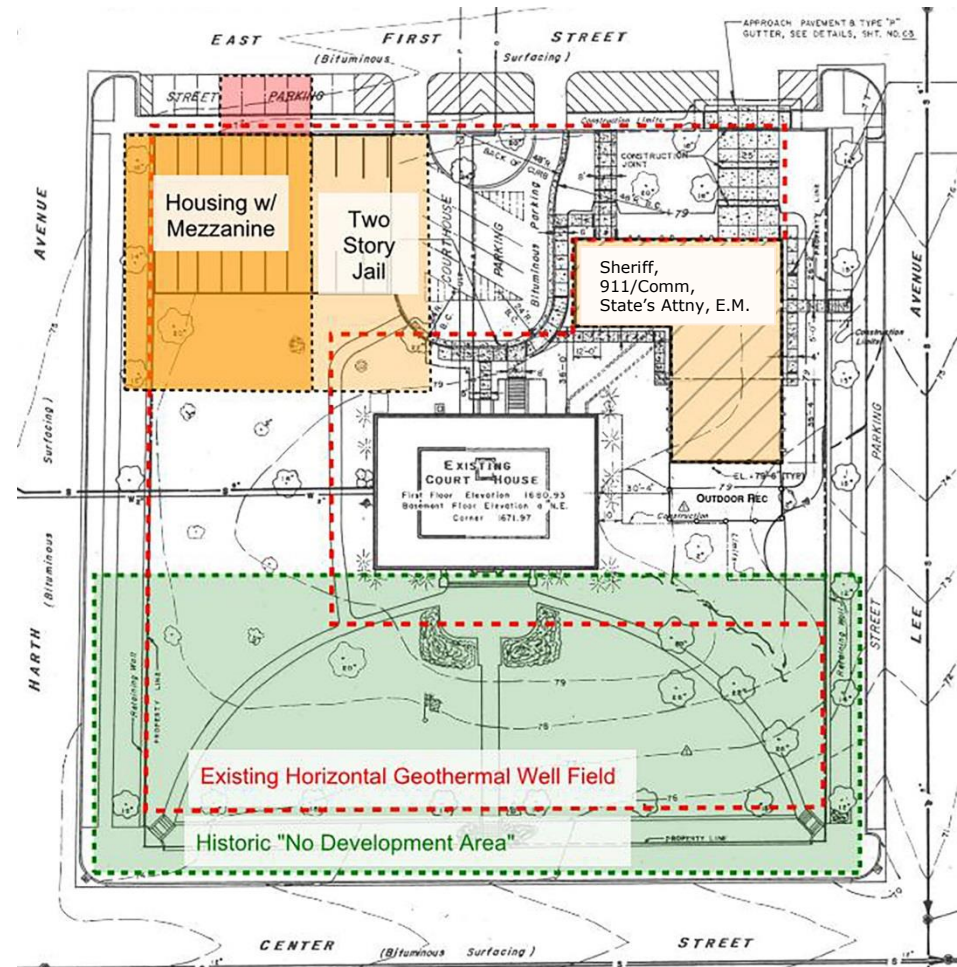
# Options

## Lake County, Madison, South Dakota Jail / Public Safety Building Needs Assessment

**Option 3**  
New Jail – Northwest  
corner of courthouse square

Total New  
Construction:  
19,514 sf  
Total Remodel:  
8,940sf  
Program Requires:  
28,456 sf

Median Project Cost  
Est.  
\$11.49 million



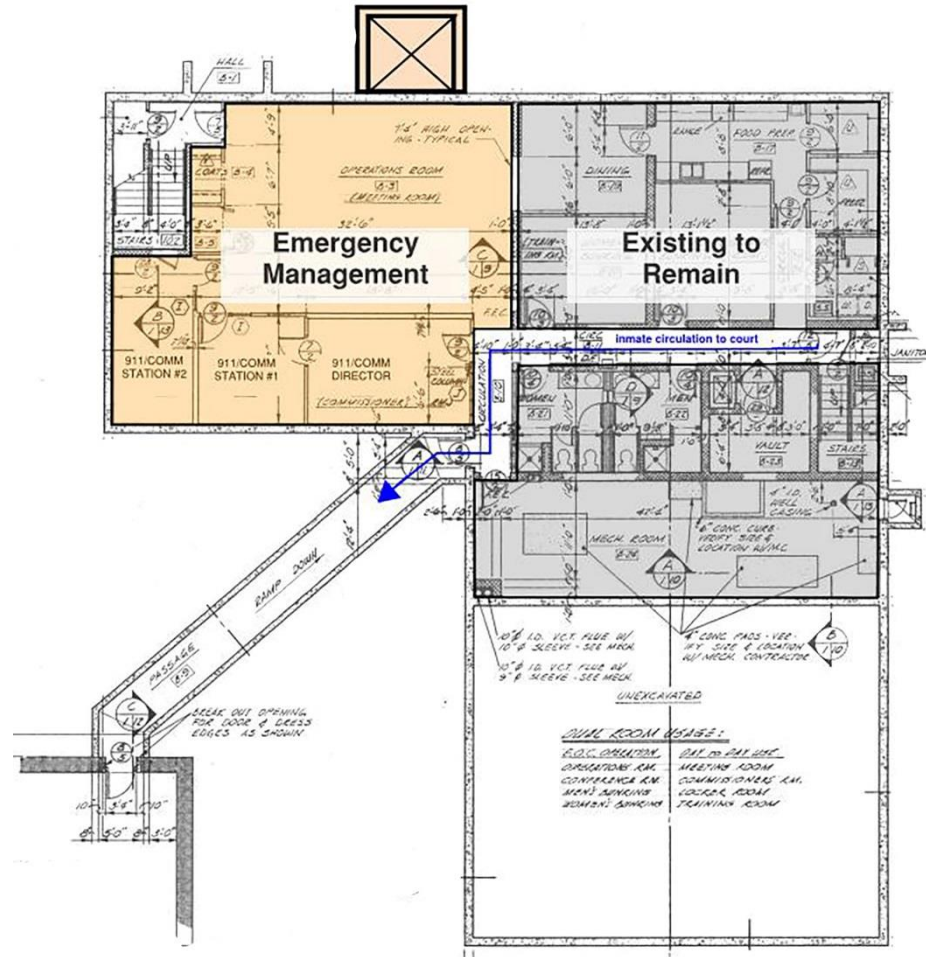
# Options

## Lake County, Madison, South Dakota Jail / Public Safety Building Needs Assessment

Option 3  
New Jail – Northwest  
corner of courthouse  
square

New:  
Elevator and Stair

Remodel:  
Emergency  
Management





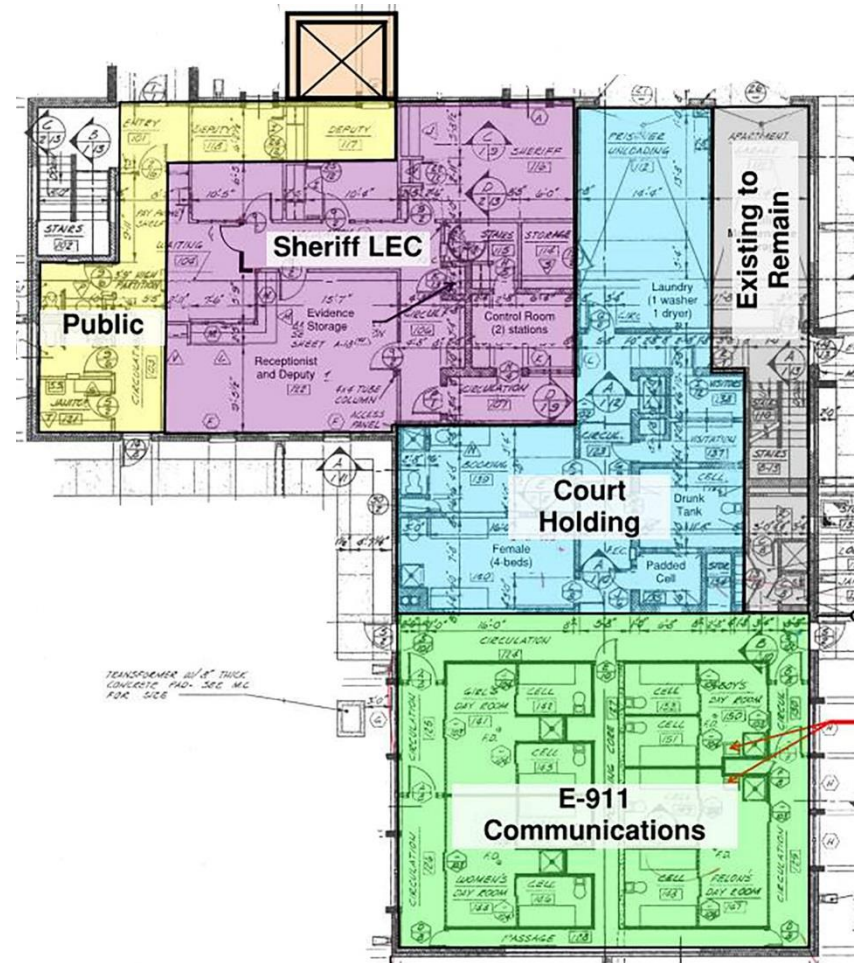
# Options

## Lake County, Madison, South Dakota Jail / Public Safety Building Needs Assessment

**Option 3**  
New Jail – Northwest  
corner of courthouse  
square

**First Floor**  
New:  
Jail Housing, Jail  
Support,  
Intake/Release/Evid/  
Med  
Elev. & Stair,

Remodel:  
Public, Sheriff, Court  
Hold &  
911/Communications



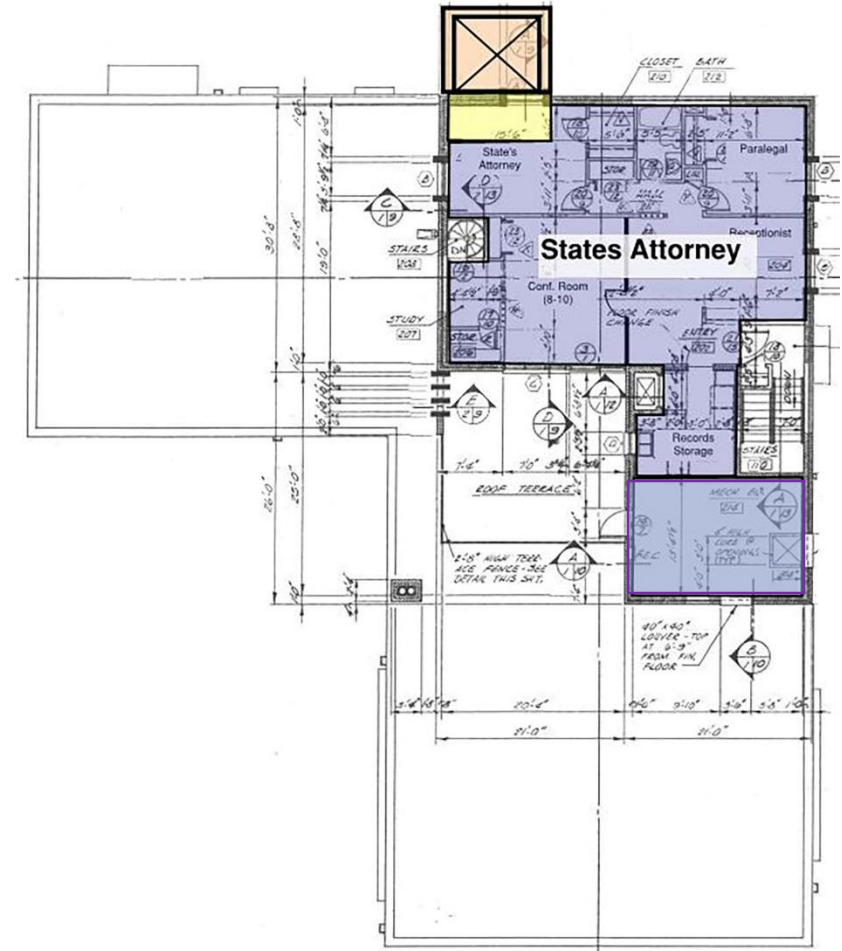
# Options

## Lake County, Madison, South Dakota Jail / Public Safety Building Needs Assessment

**Option 3**  
New Jail – Northwest  
corner of courthouse  
square

**Second Floor**  
New:  
Elevator & Stair

Remodel:  
States Attorney



# Options

## Lake County, Madison, South Dakota Jail / Public Safety Building Needs Assessment

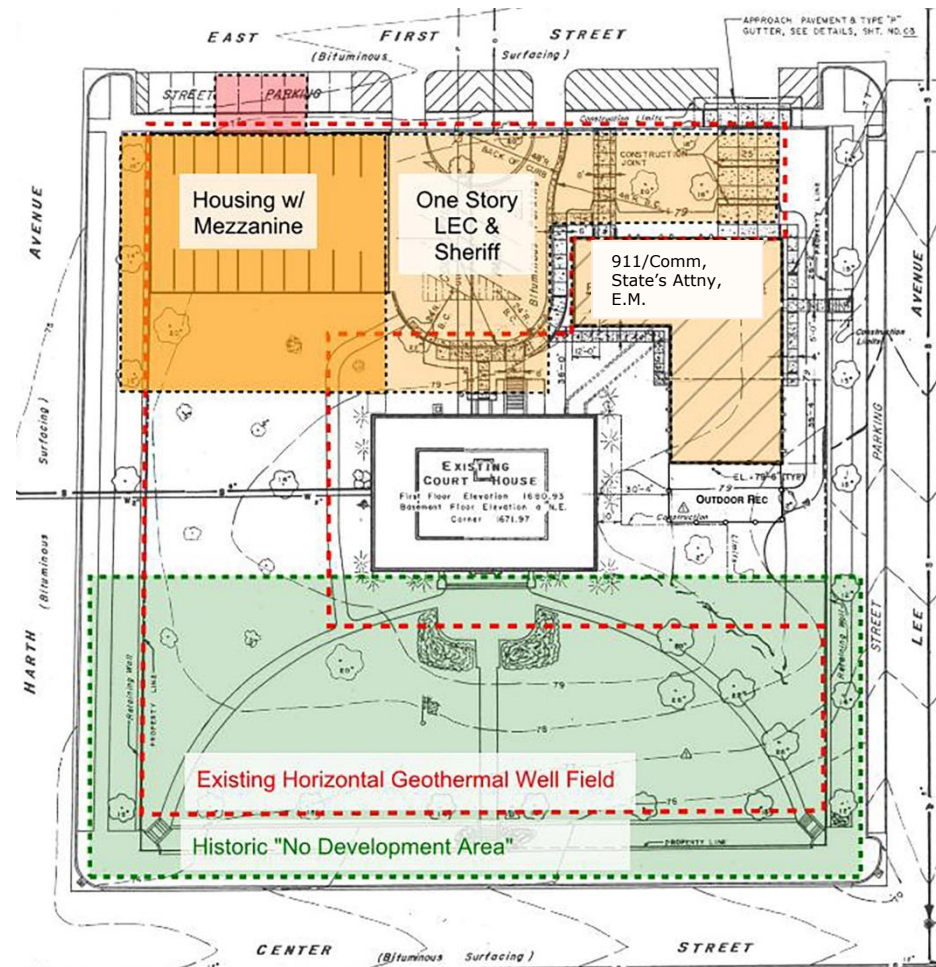
**Option 4 & 4a**  
New Jail & LEC (could  
be a "Greenfield"  
site)

Total New  
Construction:  
24,470 sf

Total Remodel:  
4 – 5,040 sf or 4a - 0  
Program Requires:  
4 – 29,510 sf or  
4a – 24,470 sf

**Option #4**  
Median Project Cost  
Est.  
\$11.74 million

**Option #4a**  
Median Project Cost  
Est.  
\$10.69 million



# Options

## Lake County, Madison, South Dakota Jail / Public Safety Building Needs Assessment

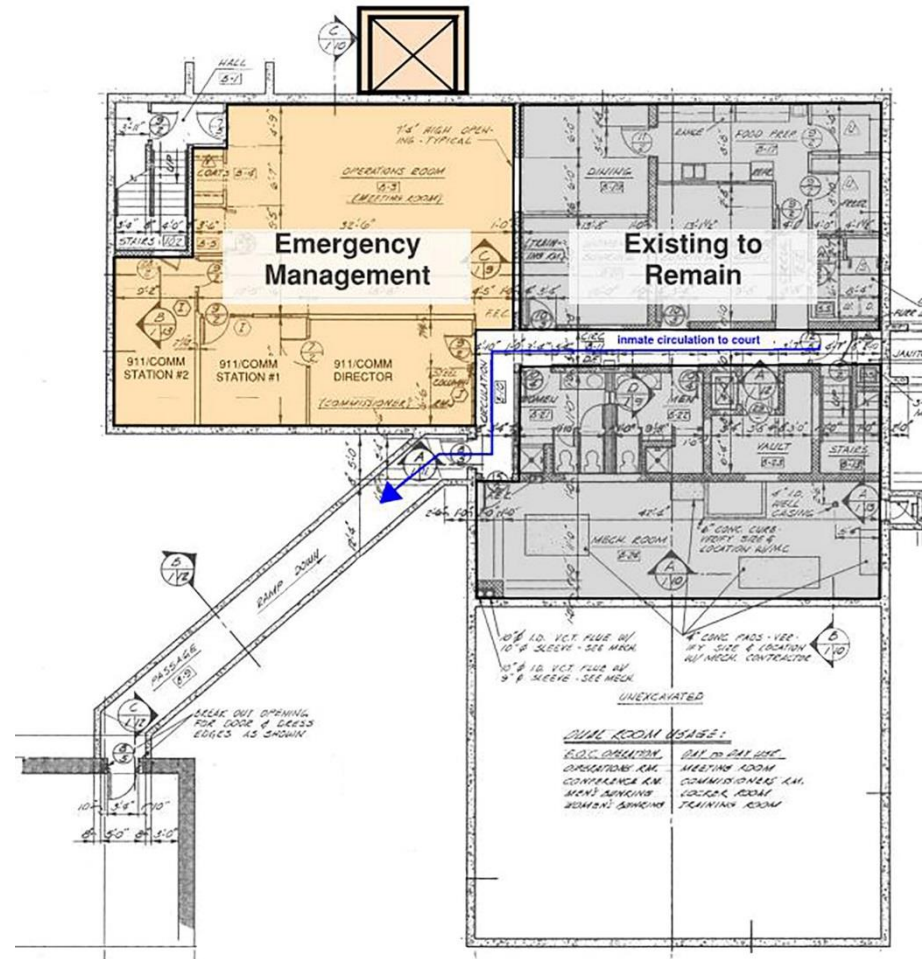
Option 4 & 4a  
New Jail & LEC  
(could be a  
"Greenfield" site)

4  
New:  
Elevator and Stair

Remodel:  
Emergency  
Management

4a  
New:  
Elevator and Stair

Remodel:  
none





# Options

## Lake County, Madison, South Dakota Jail / Public Safety Building Needs Assessment

Option 4 & 4a  
New Jail & LEC  
(could be a  
"Greenfield" site)

4

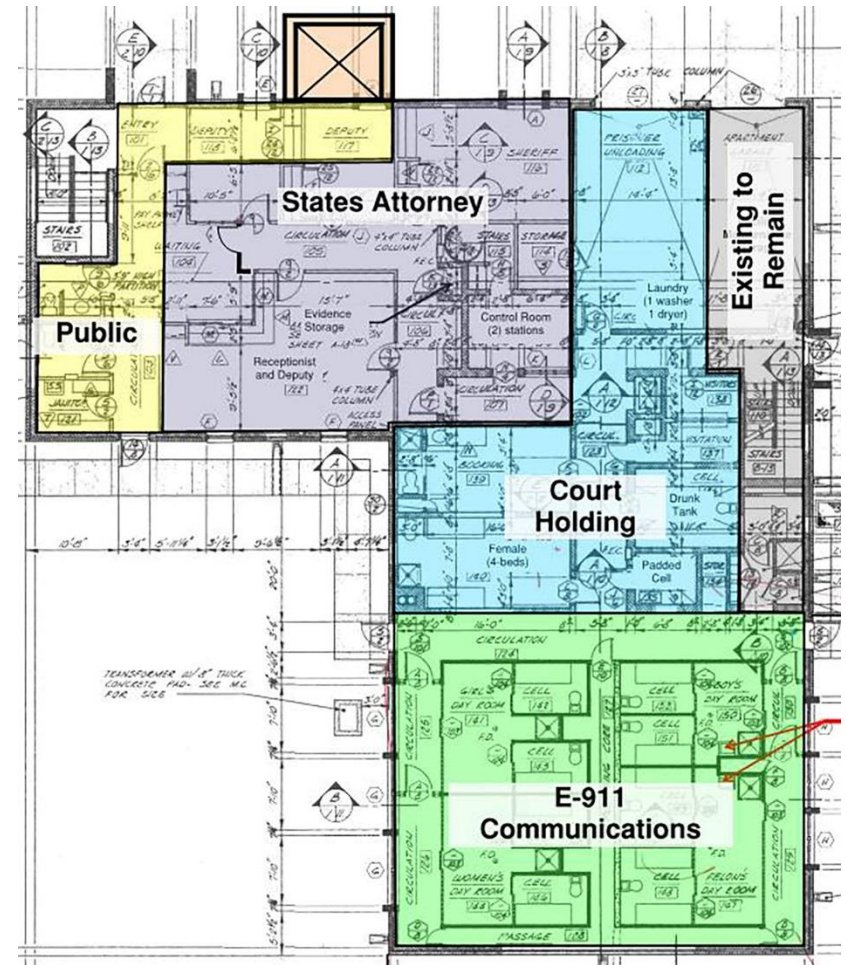
First Floor  
New:  
Elev. & Stair,

Remodel:  
Public, State's  
Attorney, Court Hold  
&  
911/Communications

4a

First Floor  
New:  
Elev. & Stair,

Remodel:  
none



# Options

## Lake County, Madison, South Dakota Jail / Public Safety Building Needs Assessment

Option 4 & 4a  
New Jail & LEC  
(could be a  
"Greenfield" site)

4

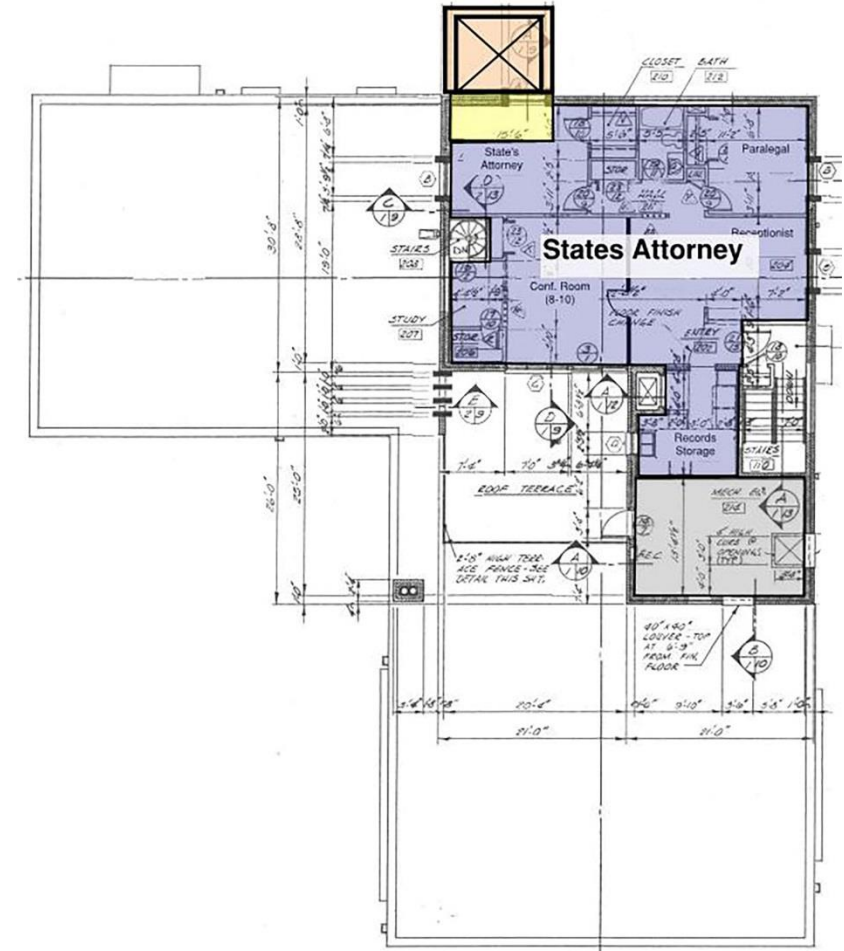
Second Floor  
New:  
Elevator & Stair

Remodel:  
States Attorney

4a

Second Floor  
New:  
Elevator & Stair

Remodel:  
none



# Options

## Lake County, Madison, South Dakota Jail / Public Safety Building Needs Assessment

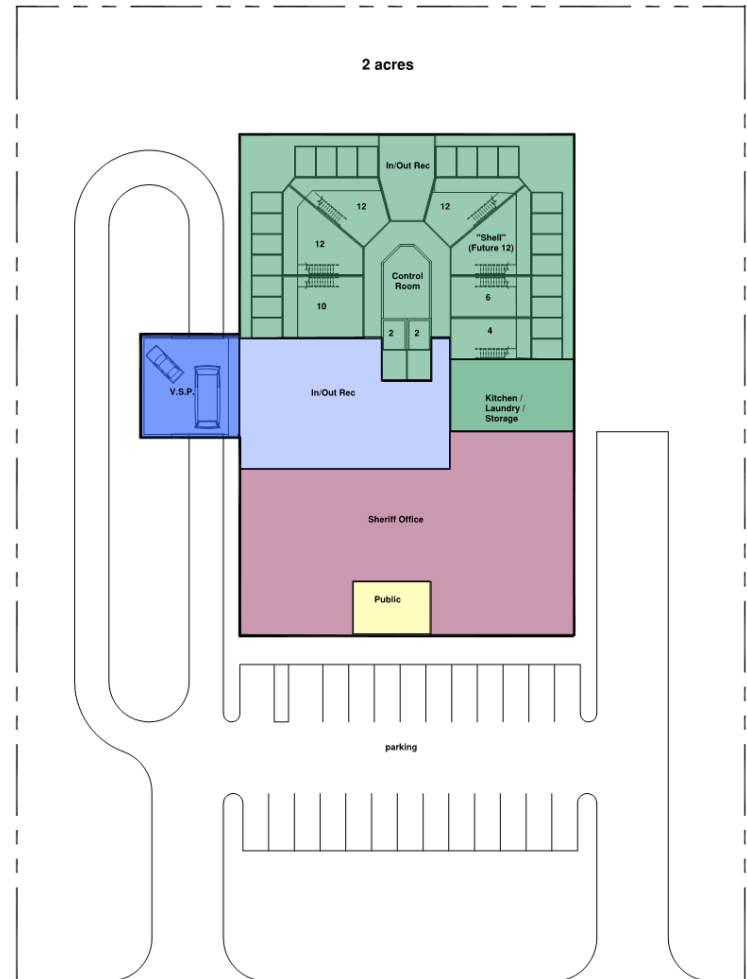
**Greenfield 4a**  
New Jail & LEC (could  
include P.D.)

Total New  
Construction:  
24,470 sf

Total Remodel:  
0 sf

Program Requires:  
4a – 24,470 sf

**Option #4a**  
Median Project Cost  
Est.  
**\$10.69 million**



# Options Summary

## Lake County, Madison, South Dakota Jail / Public Safety Building Needs Assessment

### Lake County Public Safety Center Options Summary

12/26/17

Spaces	Opt. #1 (northeast exp)	Opt. #2 (northwest exp)	Opt. #3 (northwest jail)	Opt. #4 (New Jail, LE & remodel PSB)	Opt. #4 a (New Jail, LE)
Public Reception	✓	✓	✓	✓	✓
Sheriff Admin.	remodel	remodel	remodel	✓	✓
Madison P.D. Admin.	-	-	-	?	?
Jail Housing/Class.	60/72	60/72	60/72	60/72	60/72
H1	✓	✓	✓	✓	✓
H2	✓	✓	✓	✓	✓
H3	✓	✓	✓	✓	✓
H4	✓	✓	✓	✓	✓
H5 - Male	✓	✓	✓	✓	✓
H5 Female	shell	shell	shell	shell	shell
E-911 Communications	remodel	remodel	remodel	remodel	-
State's Attorney	remodel	remodel	remodel	remodel	-
Emergency Management	remodel	remodel	remodel	remodel	-
Elevator (existing PSB)	✓	✓	✓	✓	✓
<b>Project Cost (millions)</b>	<b>\$12.48</b>	<b>\$12.28</b>	<b>\$11.49</b>	<b>\$11.74</b>	<b>\$10.69</b>



## **Option #1: Expand north and east of the PSB**

Pros: One facility contained in one location.  
Doesn't change current location.  
Secure connection for jail to court is maintained.

Cons: Would require city variance to encroach onto 1<sup>st</sup> St NE and Lee Ave.  
Some lost street parking.  
Most difficult/expensive Phasing of construction, to keep facility in operation while construction progresses.

## **Option #2: Expand north and west of the PSB**

Pros: One facility contained in one location.  
Doesn't change current location.  
Secure connection for jail to court is maintained.  
No encroachment on Lee Ave.

Cons: Would require city variance to encroach onto 1<sup>st</sup> St NE.  
Lost parking.  
Impact on geothermal well field. (build over well field)  
Second most difficult/expensive Phasing of construction, to keep facility in operation while construction progresses.

### **Option #3: New Jail, northwest corner of courthouse**

Pros: Jail still located on courthouse square.

Construction could be done with no impact to current jail operations.

Cons: Would require city variance to encroach onto 1<sup>st</sup> St NE.

Lost site parking.

Most impact on geothermal well field. (build over well field)

Moving inmates to court would require walking outside or transporting

over to PSB to access secure connection tunnel.

### **Option #4: New Jail, TBD site**

Pros: Construction could be done with no impact to current jail operations.

No lost parking.

No impact on geothermal well field.

No city variance required.

Possible inclusion of P.D. in law enforcement

PSB remodel could be easily phased (later if preferred).

Cons: Site acquisition cost

Moving inmates to court would require transporting to PSB, to access

secure connection tunnel. (V.S.P. and holding already in-



Lake County, Madison, South Dakota  
Jail / Public Safety Building  
Needs Assessment

2018 January 15

**Thank  
You  
Questions**