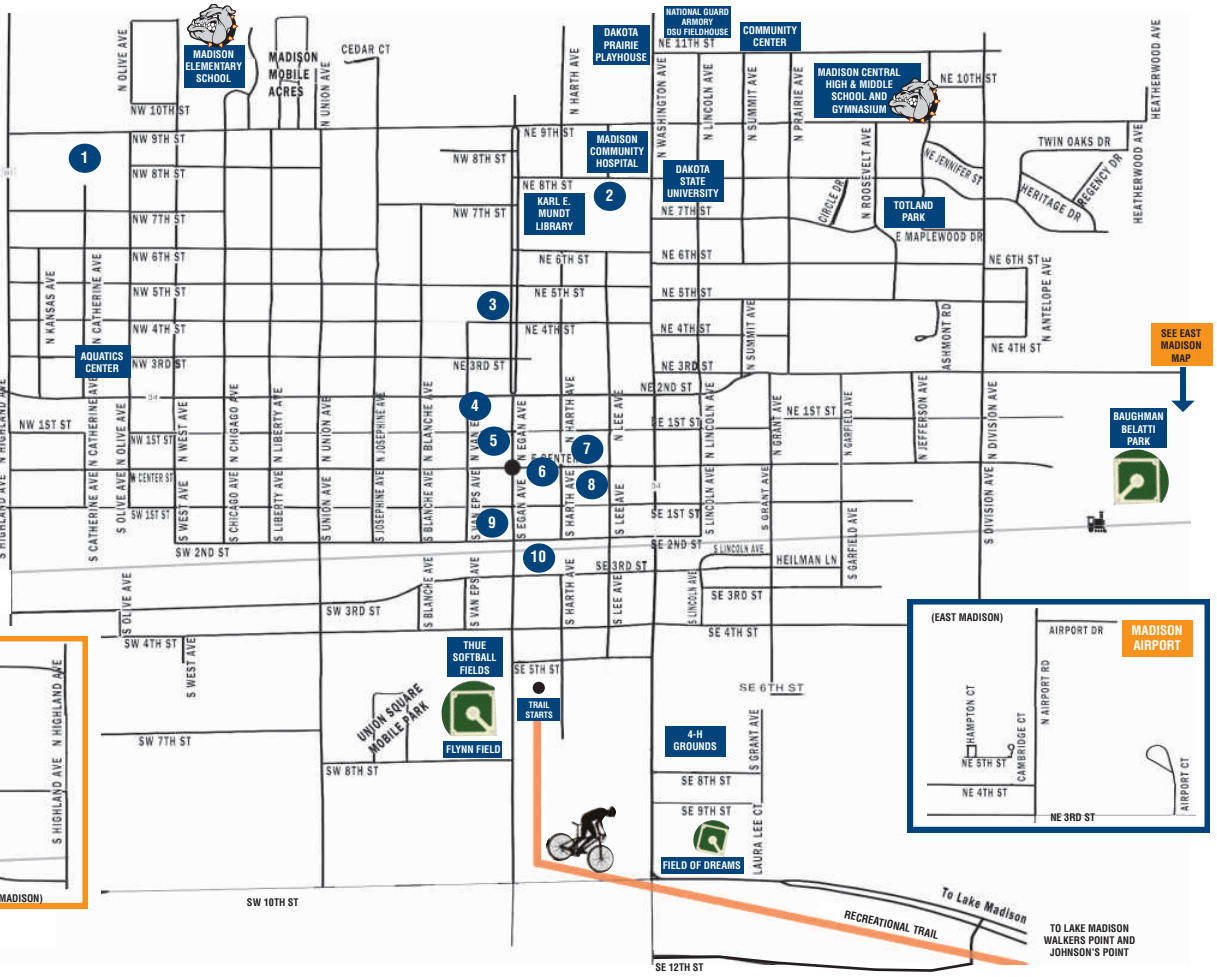
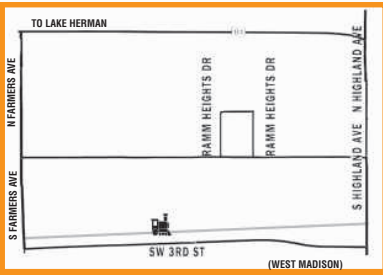


# WELCOME TO MADISON

This comprehensive map is provided to guide you in and around Madison. Larger maps are available at the Greater Madison Area Chamber of Commerce located at 315 S. Egan Avenue.

## POINTS OF INTEREST

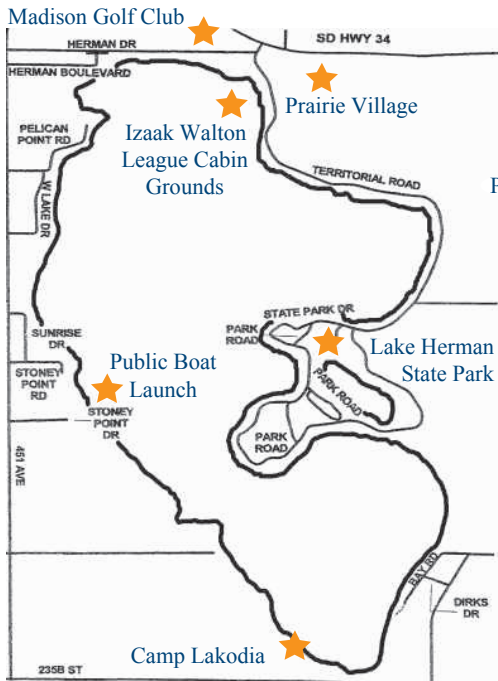
- 1 NORTHWEST PARK
- 2 SMITH ZIMMERMAN MUSEUM MEMORIAL PARK
- 3 CITY ARMORY
- 4 CITY HALL/POLICE STATION
- 5 POST OFFICE
- 6 LAKE COUNTY COURTHOUSE
- 7 PUBLIC LIBRARY/LIBRARY PARK
- 8 CHAMBER OF COMMERCE
- 9 LAIC - ECONOMIC DEVELOPMENT RAILROAD MUSEUM
- 10 FIRE STATION



# WELCOME TO OUR LAKES

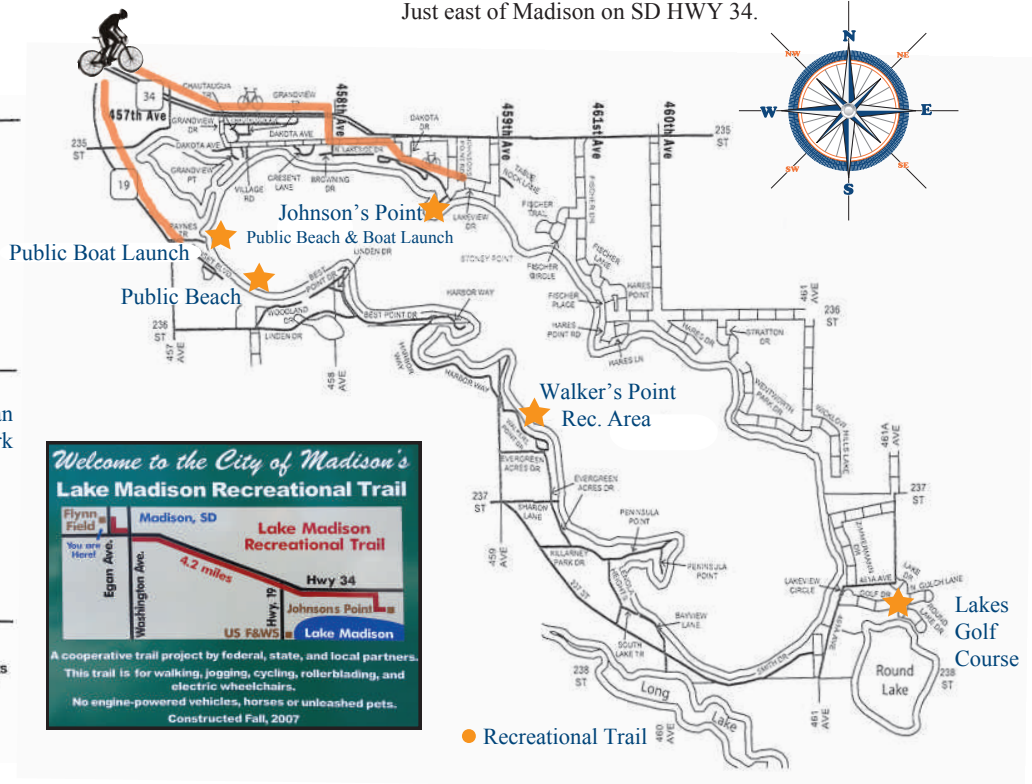
## LAKE HERMAN

Just west of Madison on SD HWY 34.



## LAKE MADISON

Just east of Madison on SD HWY 34.



*Welcome to the City of Madison's*  
**Lake Madison Recreational Trail**

Flynn Field  
 Madison, SD  
 Egan Ave.  
 Washington Ave.  
 4.2 miles  
 Hwy 34  
 Johnsons Point  
 Lake Madison  
 US F&WS

A cooperative trail project by federal, state, and local partners. This trail is for walking, jogging, cycling, rollerblading, and electric wheelchairs. No engine-powered vehicles, horses or unleashed pets. Constructed Fall, 2007

● Recreational Trail