

Madison

2015 Area Guide

South Dakota

Valuable Coupons Inside

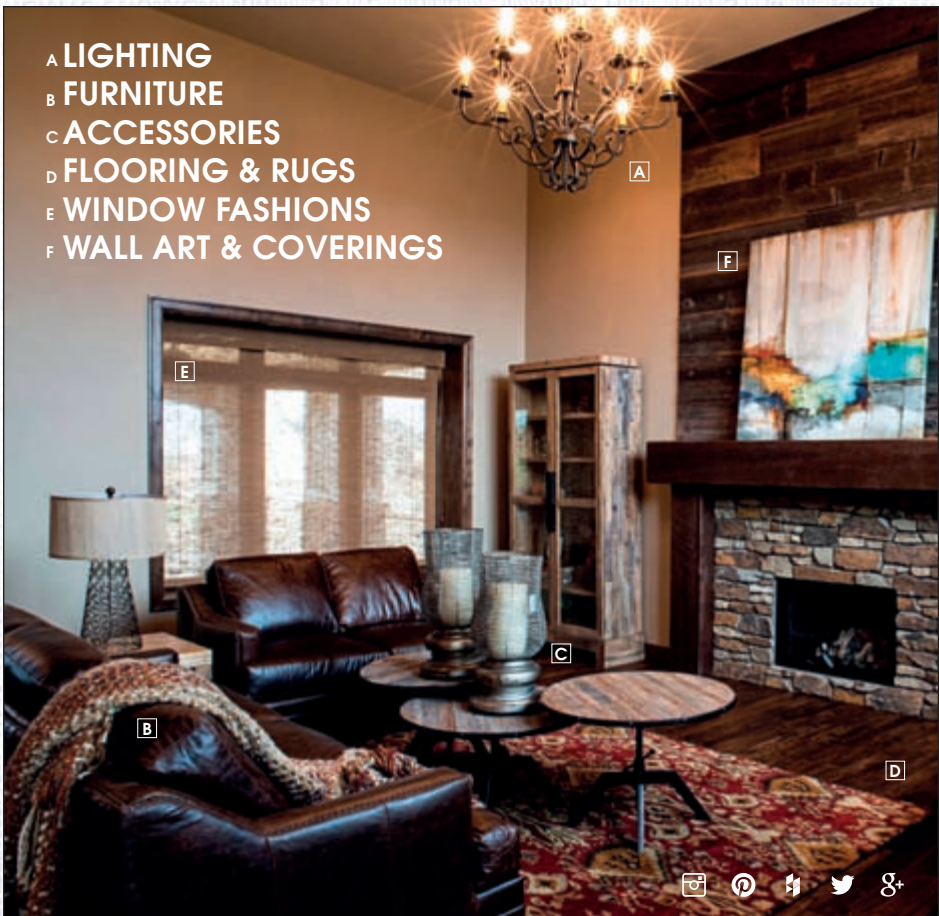


- Attractions
- Businesses
- Events

85^{Years}
1930 - 2015
CHAMBER OF COMMERCE
MADISON
Discover the Unexpected

www.chamberofmadisonsd.com

- A LIGHTING
- B FURNITURE
- C ACCESSORIES
- D FLOORING & RUGS
- E WINDOW FASHIONS
- F WALL ART & COVERINGS



from your floors to your lighting and everything in between



Amanda



Debra



Karla



Maureen



Teresa



Tom

MEET OUR DESIGNERS

COMPLIMENTARY INTERIOR DESIGN



MONTGOMERY'S

Madison • 605.256.4000 • 747 Washington Ave • montgomerys.com

Welcome to Madison



Welcome to the greater Madison area, where you will “Discover the Unexpected”!

A place to be involved — with schools and athletic programs, Dakota State University, Prairie Village, five area lakes for recreation, long-time local businesses, and industries offering quality services and economic opportunities. Residents, industries and visitors will find a progressive community and a hometown atmosphere.

A place to experience the community — parks, trails, sports, and cultural activities, churches, community events, and friendly businesses to greet you. Numerous outdoor recreational opportunities, a progressive healthcare system, new retail options, established industry and innovative technology make Madison the ideal place to invest, visit, and live.

A place with a rich history and promising future — three museums, historic Egan Ave., a living prairie history museum; plus newly constructed retail, ag businesses, health care facilities and schools, eating establishments, attractions, and entertainment venues.

A place with an unmatched quality of life — where children are safe, dedicated leaders make improvements to our community, wellness opportunities are encouraged, quality health is supported, and education, business and industry develop partnerships for increased student and employee opportunities.

As you look for a perfect spot — for your next vacation, a weekend of family fun, or your next home; discover Madison! Madison offers an unmatched quality of life for those who call it home; and an amazingly unique experience for those passing through.

2015 marks the 85th Anniversary of the Greater Madison Area Chamber of Commerce. Members invite you to come “discover the unexpected”!

~Rosie Jamison
Executive Director
Greater Madison Area
Chamber of Commerce



Table of Contents

Events Calendar	2-3	Healthcare Services	38
All About Madison	4-26	Lodging/Camping	39
Ag/Industry	27	News/Information	40
Attractions/Recreation	28	Non-Profit Organizations	40
Automotive	31	Professional Services	42
Churches	32	Realty/Rental	43
Construction/Home Repair	33	Restaurants	44
Education	35	Retail	46
Financial Institutions	35	Services	49
Financial/Insurance Services	36	Telecommunications	52

www.chamberofmadisonsd.com • 315 S. Egan Ave., Madison, SD • 605-256-2454

Produced for and distributed by the **Greater Madison Area Chamber of Commerce** • 315 S. Egan Ave., Madison, SD • www.chamberofmadisonsd.com. Designed and printed by **Leader Printing**, Madison, SD and edited by **GMACC** Madison, SD. All rights reserved. No part of this publication may be reproduced without the written permission of the **Greater Madison Area Chamber of Commerce** © 2015 • Thank you to community members for guide contributions. Historic Prairie Village cover photo from Chad Coppess of SD Tourism. • Unless otherwise noted, all addresses are Madison, SD 57042 and area code is (605).



Calendar of Events



Discovery Day July ... ALL ABOARD

MARCH 2015

- 26th** 5:30 PM **East River Electric 51st Annual Mountain Oyster Fundraiser for LifeScape**
Nicky's Restaurant
- 28th** 2:00 PM **Polar Plunge – SD Law Enforcement benefit for Special Olympics**
The Community Center

APRIL 2015

- 17th** 5:30–7 PM **Izaak Walton League Madison Chapter #16 Annual Fish and Bullhead Fry**
Izaak Walton League Clubhouse/Grounds
- 30th** 6 PM **Legends & Legacy Banquet – DSU Foundation**
Dakota Prairie Playhouse

MAY 2015

- 1st** 3 PM **Madison City Wide Rummage Sales**
- 2nd** 8 AM **Madison City Wide Rummage Sales**
- 9th** 10 AM **Consignment Auction**
Prairie Village
- 10th** 11 AM **Prairie Village Opening Day**
Prairie Village
- 15th – 17th** **Free Fishing Weekend and Free Entrance to SD State Parks and Rec Areas**
- 18th – 19th** **State A H.S. Girls Golf Tournament**
Madison Golf & Country Club
- 30th** 9 AM **MadManMini Triathlon**
The Community Center

JUNE 2015

- 7th** 7 PM **Miss Prairie Village & Miss Prairie Princess Pageant**
Prairie Village
- 12th** 6:30 PM **Northern Bull Riding Tour**
Prairie Village

- 13th** 10 AM **Luce Cabin Pioneer Day**
Lake Herman State Park
- 19th** Noon **Chamber Golf Classic Shot Gun Start**
Madison Golf & Country Club
- 21st** 7 PM **Prairie Village Variety Show**
Prairie Village
- 21st – 26th** **DSU GenCyber Camp**
DSU Campus
- 26th – 27th** **Madison Senior Games**
Various Madison Locations
- 26th – 28th** **Motongator Joe's Country Music Festival**
Prairie Village
- 27th** 10 PM **Ignite the Night 5K**
Downtown Madison

JULY 2015

- 4th** 10 PM **Fireworks over Lake Herman**
North Shore of Lake Herman
- 11th – 12th** **Railroad Days**
Prairie Village
- 25th** 7–9 AM **Tour the City Road Races**
Egan Avenue
- 8 AM – 5 PM **Madison Discovery Day**
Egan Avenue and More
- 9 AM – 3 PM **Mart in the Park**
Library Park



Miracle Treat Day – Dairy Queen

- 30th** **Miracle Treat Day**
10 AM–11 PM *Madison Dairy Queen*





Dakota State University Football



Santa's Sleigh at Chamber Day with Santa

31st 6 PM Johnny Rogers "Country Legends"
Concert
Prairie Village

AUGUST 2015

1st 6 PM Johnny Rogers "History of Rock
& Roll" Concert
Prairie Village

2nd 11 AM 22nd Annual Madison Car Show
Prairie Village

4th 5 PM National Night Out
Westside Park



Historic Prairie Village Steam Threshing

28th – 30th 53rd Annual Steam Threshing
Jamboree (Ford-Ferguson)
Prairie Village

8 AM–5 PM

28th 3 PM Fall Madison City Wide
29th 8 AM Rummage Sales

SEPTEMBER 2015

3rd 5–6 PM Chamber Welcome to DSU Students
Madison City Armory

12th 7:30 PM Cassie & The Bobs
"Music of Patsy Cline"
Prairie Village

18th 7 PM MHS Homecoming Football Game
Trojan Field

26th 2 PM Chamber Rooster Rush
Fall Golf Social
Lakes Golf Course

OCTOBER 2015

3rd 10 AM DSU Trojan Day Parade
Egan Ave.

6 PM DSU Homecoming Football Game
Trojan Field

11 AM–4 PM Pumpkin Train
Prairie Village

20th 11 AM–1 PM Madison Kiwanis Pancake Day
Madison City Armory

4:30–7 PM

30th 4–5:30 PM Trick or Treat
Madison Chamber Businesses

NOVEMBER 2015

4th–Dec. 18 Dust, Drought & Dreams Gone Dry
Library Hours
National Exhibit on the Dust Bowl
Madison Public Library

13th 5:30 PM MCSEF 6th Annual Philanthropy
Dinner
Dakota Prairie Playhouse

28th 9 AM–3 PM Annual Chamber Show & Sell
Dakota Prairie Playhouse & DSU Fieldhouse

28th - All Dec. Chamber Holiday Promotions

DECEMBER 2015

1st – 24th Holiday Activities &
12 Days of Christmas Give Away

12th 9 AM–12:30 PM Chamber Day with Santa
Madison City Armory

JANUARY–FEBRUARY 2016

Sundays Noon–3 PM
Outlaw Ice Races on Brant Lake
Shipwreck Bar & Grill

Feb. 2 6:30 AM–10 PM
Madison/DSU Hosts the
Legislature Day
SD State Capital, Pierre

For an updated list of events, please visit www.chamberofmadisonsd.com/events/



Community Profile



Madison Depot

Madison ... A great place to live, work and play!

CountyLake
County SeatMadison

DEMOGRAPHICS

Population6,474
Median Age37
Number of Households2,434
Median Household Income\$36,620
Median House Value\$92,200
(Information taken from 2010 census)

LEADING EMPLOYERS IN 2014 (full and part-time)

Dakota State University 254 FT 279 PT = 533
Manitou Group 305 FT 7 PT = 312
Madison CommunityHospital 171 FT 27 PT = 198
Madison Central School District 132 FT 11 PT = 143
Global Polymer Industries 128 FT 3 PT = 131
East River Electric Power Coop 128 FT 1 PT = 129
PPD/UMHW employee # confidential
Bethel Lutheran Home 56 FT 66 PT = 122
Prostrollo All American
Auto Mall 64 FT 22 PT = 86
Rosebud Manufacturing 72 FT 3 PT = 75
Secure Banking Solutions 47 FT 23 PT = 70

TAXATION

Sales Tax

State4%
Local2%
BBB1%

Property Tax Rate*

Owner Occupied Home1.65%
Non-Ag2.20%
Ag County Avg.1.06%

*Property Tax Rate = effective tax rate as a % of property value.
Effective tax rates are from the, based on 2015 taxes payable.

State Income TaxNone

UTILITIES

Water/Waste WaterCity of Madison
ElectricCity of Madison, East River Electric
Power Cooperative, Heartland Consumers
Power District, WAPA, Sioux Valley Energy

Natural GasNorthWestern Energy

Telecommunications ..Century Link, Interlakes Wireless,
Midcontinent Communications,
Sioux Valley Wireless, VAST

GOVERNMENT – Mayor & Council Municipal Services

City Commissioners4
Mayor1
Sheriff’s Office12
City Police11
Fire DepartmentChief + 28 Volunteers
Fire Insurance RatingClass 6

City & County Zoning Yes

EDUCATION

Dakota State University256-5111
ECCO, Inc256-6628
St. Thomas Elementary School256-4419
Madison Christian School427-0109
Madison Elementary School256-7721
Madison Middle School256-7717
Madison High School256-7706
District Administration Office256-7700

SCHOOL ENROLLMENT (FALL 2014)

Pupil, Teacher Ratio
Madison High School – 36515:1
Madison Middle School – 27814:1
Madison Elementary School – 49015:1
St. Thomas Catholic School K-5 – 508:1
Madison Christian School K-5 – 186:1
Dakota State University3.047

HOUSING

Average Cost of Homes\$149,254
New Construction\$197,006

COMMERCIAL SERVICES

Newspaperdaily/weekdays
Cable & Satellite Television4
Banks & Credit Unions3+2
Real Estate4
Insurance14

CLIMATE

Average Summer Temperature68°F
Average Winter Temperature23°F
Average Annual Precipitation23”

COMMUNITY FACILITIES

- Churches – 16 Protestant, 1 Catholic
- Madison Public Library and Karl Mundt Library
- Madison Community Center – Swimming, Racquetball, Basketball, Weight Lifting, Exercise, Meeting/Party Room
- Madison Outdoor Aquatic Center
- Community Center Wellness Studio – Exercise
- 2 State Parks & Recreation Areas
- 10 City Parks & Ball Fields • Bike & Recreational Trail
- Madison Community Hospital and Clinic
- Depot Community Room and Railroad Museum
- Gymnasium • Senior Citizen’s Center

CITY & COUNTY PHONE NUMBERS*

City of Madison/Finance Office256-7500
Greater Madison Area Chamber of Commerce...256-2454
Lake Area Improvement Corporation256-0797
Fire Department (Non-Emergency).....256-7523
Sheriff’s Office256-7615
Lake County Dispatch256-7620
Emergency911

*The area code for all of South Dakota is (605)

MADISON SINCE 1880



For more information about the opportunities awaiting you in Madison, South Dakota visit us at www.madisonworks.com or call us at 605-256-0797.

Julie Gross
Lake Area Improvement Corporation
Executive Director

Interested in expanding or relocating your business?

With low interest loans, relocation incentives, technology opportunities, and a competitive business environment, **Madison is open for business.**

Whether you're moving your business or expanding operations, **we are ready to welcome you.**

GET STARTED AT:
madisonworks.com



315 S. Egan Avenue, Madison, SD 57042 • 605-256-0797
Julie@madisonworks.com • www.madisonworks.com



Outdoor Recreation



Ladditude Pleasure Cruise – Lake Madison

Madison area lakes — Herman, Madison, Brant, Long and Round — provide a variety of fishing, camping and water sport recreation. The five glacial lakes total over 7,000 surface acres for residents and visitors to enjoy and experience.



Fishing near Walkers Point Recreation Area on Lake Madison

The lakes offer options for every season from birding, boating, panoramic color reflected on the water to winter recreation on the ice and snow. There is something for all!

FISHING

On and off shore fishing for walleye, perch, crappie, northern, smallmouth bass silver bass and bullhead provide a variety of great fishing opportunities for anglers year round. Recently updated boat launching areas on Lake Madison, Herman and Brant allow for easy access to the water.



Ice Fishing Lake Madison, Herman and Brant

HUNTING

The Madison area and surrounding counties provide excellent hunting opportunities for dove, pheasant, waterfowl and whitetail deer.

Several public hunting areas, both federal and state, are available for hunters to enjoy.

In addition to waterfowl hunting, the spring migration of ducks and geese to the area attract bird watchers from across the region as huge numbers of waterfowl congregate in the area.



First Day Success

CAMPING

Lake Herman State Park, located two miles west of Madison, is a destination for camping enthusiasts from near and far.

The beautiful hardwoods provide a canopy for 72 electrical camping sites, tent-only sites and camping cabins. Nearby, Lake Madison's Walker Point Recreation Area has 40 electrical camping sites, tent-only sites and camping cabins.

In addition, Izaak Walton League and Prairie Village offer camping sites and facilities along with day stays at our public beaches and ball parks to enjoy happenings in the area while here.

Golf Courses



Madison Golf & Country Club's Holes #6 and #10

The Madison area features two golf courses — one 18-hole and one 9-hole — for a social outing or a competitive game. Both of the courses offer spectacular views of Madison's area lakes while golfers are teeing off or relaxing in the clubhouse/lounge after a round.

MADISON GOLF AND COUNTRY CLUB

The Madison Golf and County Club is an 18-hole well-kept and challenging golf course west of Madison with several holes

offering a scenic view of Lake Herman and historic Prairie Village.

The Madison Golf and County Club is a favorite local 18-hole layout where several tournaments are held. As one of the area's best courses, it features 6,162 yards of golf from the longest tees for a par of 71 and a recently remodeled clubhouse and lounge.

For a tee time contact 256-3991 or visit www.madisongolfsd.com.



Aerial view of Lakes Golf Course on Round Lake & Lake Madison

LAKES GOLF COURSE

The Lakes Golf Course is a 9-hole course featuring rolling greens and elevation changes that enhance the panoramic view of both, Round Lake and Lake Madison.

The Lakes Golf Course has something to offer every level of golfer, from the beginner to the more seasoned pro. The Lakes Golf Course is a part of the Lakes Community and next to the Lakes Bar & Grill, Lake Lodge and RV Resort and Cottages.

For a tee time contact 483-3535 or visit www.golfatthelakes.com.

GREAT BIG FAMILY FUN.

Make vacations more memorable at AmericInn Lodge & Suites® Madison. Rates start at \$89.00*

- * Free, hot, home-style breakfast favorites
- * Free hotel-wide, high-speed wireless internet
- * Large pool and whirlpool



Welcome to the end of the day.™

504 10TH STREET SE, MADISON, SD 57042
P [605] 256.3076 F [605] 256.3085
MADISON.SD@AMERICINN.COM
[800] 634.3444 AMERICINN.COM

*GOOD ONLY AT THIS LOCATION. OFFER EXPIRES 3/31/16
©2011 AMERICINN INTERNATIONAL, LLC



Recreation Areas



Lake Herman State Park Entrance

LAKE HERMAN STATE PARK

The Lake Herman State Park has been a popular campsite for hundreds of years. It is located just west of Madison and provides a beautiful nature area for miles. The 1,350-acre lake enhances the site.

Open year round, visitors and residents will find numerous opportunities which include beach access, hiking/cross-country ski trails, camping, fishing/boating, playground areas, picnic areas and various events throughout the year. Near historic Prairie Village, Madison's 18-hole golf course and the Izaak Walton League camp grounds.

WALKER'S POINT

Walker's Point is a smaller, but complete park, tucked along the shore of Lake Madison.

This park is great for both campers and anglers and is open year-round.



The Harbor Bay off Walkers Point and Recreation Area - Lake Madison

Campsites are located near the water and many offer picturesque views of the 2,800-acre Lake Madison with restaurants, attractions and 9-hole golf course also on the lake. Fishing, boating, playground equipment and picnic areas are also offered at this park.

IZAAK WALTON LEAGUE CLUBHOUSE & GROUNDS

As you drive by the northeast shore of Lake Herman, the Izaak Walton Clubhouse and Grounds are familiar sights available to rent for camping, picnics, and receptions. Izaak Walton League is a conservation organization.

The facility is also used for Boy Scout events, firearms safety classes, youth "Step Outdoors" field day, Fourth of July fireworks display, trap shooting and rifle range. Contact 256-2824 for information, camping and clubhouse rental.



Izaak Walton Clubhouse since 1934



Let's Canoe on Lake Herman - Camp Lakodia

CAMP LAKODIA

On the shores of beautiful Lake Herman, Camp Lakodia offers attractive and updated facilities perfect for weddings, reunions, conferences, corporate events, youth camps and retreats. This refreshing location offers year-round accommodations for groups interested in a natural sanctuary or outdoor activities.

With dining and meeting facilities for up to 225, a magnificent two-story lodge that sleeps 18, six modern cabins with a view of the lake, 10 electric campsites, paddleboats,

canoes, kayaks, a pontoon boat, and more, guests will find many things to enjoy. Conveniently across the lake are Madison's 18-hole golf course, Lake Herman State Park and Historic Prairie Village for added fun.

“YOU BELONG AT CAMP LAKODIA ... The Meeting Place of Friends.” 1-877-LAKODIA or www.camplakodia.com.



Camp Lakodia Cabins

EL VAQUERO

Authentic Mexican Restaurant

(605) 427-0084

316 NE 2nd St. + Madison, SD

The advertisement features a silhouette of a cowboy on a horse against a sunset background. At the bottom, there is a colorful illustration of a Mexican restaurant building with people in traditional attire.



Sunset off Hare's Point - Lake Madison



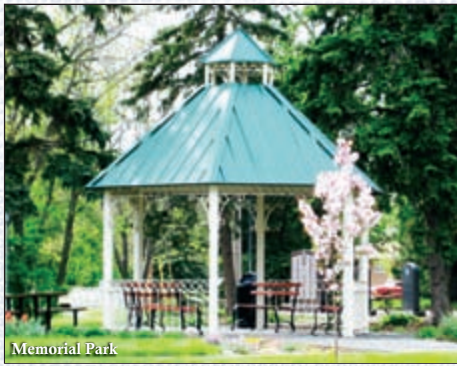
Public Parks



Aquatics Center – Swimming Pool Park

Madison has 10 city parks, two state park and both nature and recreational areas for residents and visitors to enjoy!

Westside Park, (located at NW 1st St. and Highland Ave.) features a new outdoor Aquatic Center as well as a newly updated playground, skate-park, two basketball courts, tennis court, horseshoe court, ball diamond, band shell, picnic areas and two shelters.



Memorial Park

The **Flynn Field and Thue Complex** (SW 8th St. and S. Egan Ave.) is best known for its baseball and softball diamonds. VFW Teeners, American Legion and amateur baseball, competitive softball and baseball tournaments and city league ball games are played at these Parks. In addition, Ray Schultz Field of Dreams (HWY 34 & 19 Bypass and S. Egan Ave.) hosts little league baseball games. All have restroom facilities, concessions during games and playground equipment.

Baughman/Belatti Park (1010 NE 1st St.) has five ball diamonds, soccer fields, basketball courts, sand volleyball courts, disc

golf and VFW Teeners ball diamond. Both parks have a playground area and restrooms. Concessions are available during games.

East Center Park (700 Block of E. Center St.) and **Totland Park** (NE 7th St. and Roosevelt Ave.) both host an outdoor skating rink along with Memorial Park. East Center features a warming house and Totland Park has recently been updated with new playground equipment.

Northwest Park located at NW 9th St. and Highland Ave. has a picnic area, restrooms and playground.

#1 Online Source
for everything Madison has to offer.

www.MadisonSD.com
Discover the Unexpected

Feature Highlights:

- Calendar of Upcoming Events
- Comprehensive Business Directory
- Guide to Popular Madison Attractions
- Relocation Information
- Chamber & Economic Development Portal
- Madison Booster Club Page

www.MadisonSD.com



Playground – Baughman/Belatti Park



Memorial Park – Ice Skating Rink

Library Park is located on the grounds of the Madison Public Library. It has a toddler playground and is often host to large outdoor events at the stage on the south side of the library. It has also been home to the Farmers Market for seasonal local produce sales.

Woofland Park is a new dog park located at NW 7th St. and West Ave.

One of the most scenic parks in the city is **Memorial Park**. It surrounds the Memorial Creek that flows from the northwest section of town to the southeast section of town. Cobblestone steps and walls welcome

visitors wanting to take a closer look. The gazebo is a beautiful setting for wedding, family, and senior photos. Additionally, a playground is located on the grounds of Memorial Park and in 2013 a new ice skating rink, warming house and picnic shelter was added on the west side of Memorial Park. Skate rental is provided from the warming house.



Gerry Maloney Nature Trail

The **Gerry Maloney Nature Area** is located on N. Harth Ave., just off 9th St. You will discover the beauty of nature with an interpretive gazebo and beautiful walking trails.

KWI
KUNDERT-WILLIAMS
Insurance

Personal Insurance Coverage
 Business Insurance Coverage
 Life & Health Insurance Coverage

We work hard for you.

122 West Center, Madison, SD 57042
 605-256-6608 • FAX 605-256-9463
 E-mail: info@kundertwilliams.com

BIKE TRAILS

Another recreational point of interest in Madison is the 4.2-mile recreation trail that starts at Flynn Field and travels east along Highway 34 to Johnson's Point. Whether you run, bike, skate or walk you can take in all that Lake Madison has to offer while getting a little fresh air and exercise. A recent enhancement to the bike trail was an expansion at Hwy. 34 & 19 for 1.7 miles south.



Prairie Village



Lawrence Welk Opera House & Jamboree Parade – Prairie Village

With 40 restored buildings, agricultural displays, antique tractors, log and sod houses, a steam carousel, chapel car and an operating railroad, Prairie Village invites you to “discover the unexpected.” Venture two miles west of Madison on Highways 34 & 81 to Historic Prairie Village where you will find history to explore, a gift shop, daily carousel rides and train rides every Saturday at 2:00 p.m., and during special events or by reservation for groups.

See the 1893 Chapel Car “Emmanuel,” which is on the National Historic Register, in addition to the many historic buildings and their artifacts. Enjoy the special events conducted throughout the season such as concerts and the annual Pumpkin



Train where last fall 646 children rode the train to the patch to pick their pumpkins.

The premier event of the 2015 season is the 53rd Annual Steam Threshing Jamboree August 27-30 featuring Ford-Ferguson Tractors, Trucks and Cars. Also featured are parades, a large flea market, machinery demonstrations and entertainment. The popular Great Plains and Outlaw tractor pulls will once again be a major part of the Jamboree.

Prairie Village offers camping with 270 electrical sites, two modern shower houses and an RV dump station. Daily admission to the village is included with the camping

except during special events where gate fees are in effect. Church rental is available for weddings or other facilities for picnics, family reunions or business gatherings.

Daily admission is only \$5 for adults (\$4.50 age 55+) \$2 ages 6-12, or a \$35 season pass that includes admission to most events. Special rates during the Jamboree with season passes honored.

Open daily Monday-Saturday 10 a.m. – 5 p.m. and Sunday 11:00 a.m. – 5:00 p.m. 256-3644 or www.prairievillage.org and on Facebook at Historic Prairie Village.



Giving back to the community.

NorthWestern Energy | WORKS COMMUNITY

www.northwesternenergy.com





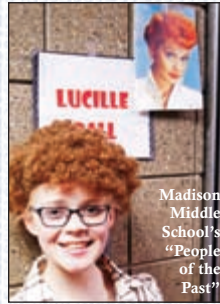
Madison High School's Gymnasium Entrance/Trophy Case

MADISON CENTRAL SCHOOL DISTRICT

The Madison Central School District (MCSD) opens its doors each day to more than 1,130 students. The mission of MCSD is to educate all students to fully achieve their personal and academic potential as lifelong learners skilled in communication, problem solving, and global responsibility. In keeping with this mission, opportunities for achievement are abound for students in the Madison public schools.

With a strong emphasis on academics,

MCSD graduates a high percentage of Regents Scholars and scholarship recipients. A strong vocal and instrumental program begins in the elementary school and carries through to Middle School and High School with show choir, jazz band, and concert bands and choirs. Other Fine Arts activities include oral interpretation, debate, and theatre.



Madison Middle School's "People of the Past"



Jenni Giles, State A Individual Champion

BANKEasy

First Bank & Trust

120 N EGAN AVENUE MADISON
256.9191 WWW.BANKEASY.COM

Member FDIC

Athletic excellence shines through the vast array of sports which have brought home many state awards in track & field, gymnastics, basketball, cross country, football, tennis, golf, wrestling, cheerleading, and volleyball.



Madison High School students enjoying new library

In addition, students can participate in FFA, FCCLA, FBLA, Student Council, Yearbook, newspaper, and National Honor Society.



Education



Madison Elementary School Playground



Ag in the Classroom 2nd-grade class

In addition to the public school system, Madison has two private schools: Madison Christian School, an Evangelical non-denominational school that educates pre-school through 8th-grade students, and St. Thomas School, a parochial school that educates pre-school through 5th-grade students. See more information on the Community Profile page.



MADISON HIGH SCHOOL

In the 2013-2014 school year the Madison High School completed a \$14.5 million dollar renovation including the addition of a state-of-the-art Science wing, improved band and vocal rooms, Pro Start Culinary classroom, updated Technical Education

wing, renovated auditorium, and a new library addition. In addition, a new gymnasium with seating for 2,253 people that benefits Madison students, parents, and community members, plus allows hosting of regional competitions.

In 2014 Madison High School was awarded \$377,000 to enhance Career and Technical Education programs. The high school has built a variety of partnerships with the business community allowing for student training by industry certified professionals for dual credit through post-secondary institutions.



Proudly serving the
Madison community
with the Power of
Forward Thinking.

www.hcpd.com



OPENING IN THE FALL OF 2015

MADISON HOSPITAL AND CLINIC



As we prepare for the completion of the new hospital, we will continue to provide exceptional health care and focus on the needs of our patients and the communities we serve.

Mary W. Beecher, MD

CERTIFIED BY THE AMERICAN BOARD OF FAMILY PRACTICE

Bernard F. Heilman, MD

CERTIFIED BY THE AMERICAN BOARD OF FAMILY PRACTICE

Laurel J. Jennings, MD

CERTIFIED BY THE AMERICAN BOARD OF FAMILY PRACTICE

Benjamin N. Liscano, MD

STARTING SEPTEMBER, 2015 - FAMILY PRACTICE

Robert J. Summerer, DO, FACOS

CERTIFIED BY THE AMERICAN BOARD OF OSTEOPATHIC SURGEONS

Wayne A. Wetzberger, MD

CERTIFIED BY THE AMERICAN BOARD OF INTERNAL MEDICINE

Mitch Poppens PA-C

Amber Johnson CNP

Delaina Sievers PA-C

Meggan Reisch CNP



917 N. Washington Ave., Madison, SD
(605) 256-6551 • www.madisonhospital.com





2014 Northstar Athletic Association Champions – DSU Trojans

“Technically, We’re Better”

DAKOTA STATE UNIVERSITY

At Dakota State University, technology is infused into all that students do. Technology plays an integral role in current and future lives and is a vital part of a DSU education. Students are inspired to build their strengths, insights and skills in IT, digital arts and design, science, math, English, healthcare, education and business to become the creators, not just the consumers, of our collective digital future.

With a placement success rate of 95% for undergraduates in 2014, and with 100% placement in many programs, opportunities with a DSU degree are immense. DSU’s technology-infused degrees give graduates the platform for today’s hottest careers.



Dakota State University Students

Technology infusion goes beyond computer science and cyber security, it is involved in every program from audio production to

elementary education, physical science and beyond. Students use the latest technological innovations in their degree, allowing graduates to be technology leaders in their field. This also includes our graduate programs as well, such as new programs in Master of Science in analytics and Doctorate of Science in cyber security.

DSU is a small school with a big impact. Students and professors drive their success beyond small-town South Dakota to a national and international level. DSU has one of only 13 programs recognized by the National Security Agency as a Center of Academic Excellence in Cyber Operations. Students are completing research work at the nation’s top physics labs and with the EPA. Education grads go on to teach elementary and high school students with the latest technology in education. Graduates also go onto the healthcare and wellness industry, including respiratory care, health

FOUR SEASONS FLEA MARKET
and
THE 5th SEASON
Boutique and Bookstore
223 North Egan Avenue, Madison
605-256-6696
www.4seasonsfleamarket.com



Services



Lake Madison home backyard beauty

MADISON AREA HEALTH SERVICES

Madison Community Hospital and Clinic is a non-profit, independent, award winning, acute care facility that has been serving the area for over a century providing inpatient medical and surgical services including an Urgent Care Clinic open from 5:00 p.m. to 8:30 p.m. Monday through Friday, and a 24/7 Emergency Room.

In the fall of 2015, a newly constructed \$36.8 million dollar medical clinic and hospital will be open on the south bypass, 323 SW 10th St., in Madison. The new facility has improved regional access and parking, increased surgical and ER space, additional radiology services, rehabilitation therapies, home health care and hospice services. www.madisonhospital.com or 256-6551.

Long-Term Care Facilities

Two multi-functional care facilities provide quality residential care throughout the region.

Bethel Lutheran Home has a nursing home plus, congregate apartments, assisted living center, day service for adults, and cottage homes at 1001 S. Egan Ave. www.bethelcommunity.com or 256-4539.

Golden Living Center offers short-term care for those recovering from an illness or surgery and long-term care, including an Alzheimer's Care Unit at 718 NE 8th St. www.goldenlivingcenters.com/locations-madison-sd.aspx or 256-4531.

information management, exercise science and biology for information systems.

The campus is also more than an elite institution for students; there are opportunities on-campus for visitors as well. The university is home to the Karl E. Mundt Library and Foundation and the Smith Zimmermann Museum. Located at Washington Ave. and NE 8th St. DSU also hosts many athletic and cultural events that are open to the public, including theatre performances, conferences, NAIA athletics, cultural shows, concerts and much more.

www.dsu.edu or 1-888-378-9988.

Great Lunch Specials
Monday - Friday • 11-2pm

Spectacular Dinner Specials
8oz Sirloin or Cod Fillet



EVERY
Friday Night
from 5-11pm

Dinning Room seats 120 people. Bar Area seats 46 people. We have upstairs available for special events seats up to 300.

Great for wedding receptions & reunions.

305 E Center St
Madison, SD **256-6376**



Sportsman's
steakhouse & lounge
Monday-Friday 10am-11pm • Saturday 3pm-close





DSU supporting Emergency Services - Lake County Sheriff's Department



Madison Public Library

Mental and Behavioral Health

The greater Madison area is home to two facilities providing behavior health, mental health and addiction services, prevention and wellness counseling and therapy.

Community Counseling Services – 914 NE Third St. • www.ccs-sd.org • 256-9656

Counseling Associates – 726 S. Washington Ave. • www.counselingassociatesmadison.com • 427-0110



Happy Library Card holders

MADISON PUBLIC LIBRARY

For over 100 years the Madison Public Library has provided library service to the residents of Madison and Lake County. Residents will find books, audio books, DVDs, magazines as well as public access computers at the library.

More recently, the library has added e-resources which are available to card holders 24 hours a day. Visit the library's website, <http://madisonpubliclibrary.blogspot.com/>, to view the electronic resources available from databases to downloadable magazines,

books, music and audio books. Other library services and programs include free book delivery, monthly book discussions and special speakers, exhibits, and other presentations. In November, "Dust, Drought, and Dreams Gone Dry" national exhibit will be displayed.

The children's department offers regularly scheduled story times. Children, ages 3–5, are invited to participate in stories, poems, songs and crafts. The summer reading program and related events are held each summer. Visit the website, or find the library on Facebook for a complete list of programs,



Great Western Bank
Making Life Great®
Member FDIC

Madison: 301 N. Egan Ave. • 256.6532
GreatWesternBank.com






Dakota Prairie Playhouse



South Dakota Symphony Orchestra Performing

dates and times. Phone: 256-7525.
Hours: Mon.–Thurs. 10 a.m.–9 p.m.
and Friday & Saturday 10 a.m.–5 p.m.

DAKOTA PRAIRIE PLAYHOUSE

Dakota Prairie Playhouse & Conference Center, located at 1205 N. Washington Ave. houses performing arts, conferences, trade shows, seminars, community functions, business meetings, banquets, wedding receptions and more. The Playhouse has a 700-seat theatre, large ballroom and lobby

which permits flexible use by two different groups simultaneously.

Dakota Prairie Playhouse is an excellent venue, with experienced staff to help make your next event an affair to remember. Call 256-5666 for information on availability and upcoming shows.



Events Center at Dakota Prairie Playhouse



Unique
BOUTIQUE LLC
 consignment
Consignment Pricing
Boutique Style

Clothing for men, women and children, fashion accessories, home decor and accent furniture.

Hours: Tues - Thurs 10-6 • Fri 10-5 • Sat 10-4
 Sun 1-4 • Closed Monday or by appointment

1229 NW 2nd Street, Madison, SD
 (605)427-0707

Sharon Patch, Owner

visit us on facebook
uniqueboutiqueconsignment
uniqueboutiqueconsignment@yahoo.com

MADISON MUNICIPAL AIRPORT

Madison's airport is located at 1600 Airport Dr. and their lobby is open 24 hours a day for pilots. The airport terminal and lobby was moved and remodeled in 2012 to better accommodate air travelers to Madison including camping and showers.

Courtesy cars are available upon request by contacting the airport manager at 256-9774. In 2015 a new taxiway is scheduled to be completed for small business jets.



Private planes utilize Madison Airport for business and pleasure



Activities



Aerial view – Madison Aquatics Center

MADISON COMMUNITY CENTER AND AQUATICS CENTER

The Madison Community Center was established in October of 2000 through a partnership with the City of Madison and Dakota State University. The Community Center provides wellness opportunities for city residents and DSU students alike. It features an indoor swimming pool, fitness center, double gym, multi-purpose gym, racquetball courts, family center, meeting rooms, childcare center and locker rooms.

There is something for all: go to new heights by adventuring on the climbing wall or shoot down the 85 ft. water slide in the aquatics area let the kids burn off some energy by using scooters, hula hoops, building blocks and much more in the Family Rec Cave.



Community Center Training Session

The CC Wellness Studio (self-access workout room) is also available to CC members. It features light exercise equipment, cable cross machine, and multiple cardiovascular machines and is located downtown on the second floor of

City Hall with 24/7 access.

For hours of operation, swimming pool schedule, or admission/membership fees, visit www.communitycenter.dsu.edu.

The City of Madison Outdoor Aquatics Center at Westside Park features a large water slide, family slide, water walk, 7,500 sq. ft. pool, sand box area, diving board, play area for toddlers, birthday party pads and concessions.

The Aquatic center is open from June through August and can be reached at 256-7530.

Celtic clippers



- Certified Groomer
- Pet Supplies, Toys, Treats
- Super Premium Pet Food



211 SW 1st St
Madison, SD

www.celticclippers.com
605.951.7689



Pure & Vita





2014 VFW 15-16 Teener Region Champions



Youth Baseball at Baughman/Belatti Park

SPORTS

Youth T-Ball Softball & Baseball

The Madison area boasts a number of opportunities for youth t-ball, softball and baseball players. Games and practices are held at Baughman/Belatti Park and the Field of Dreams for 5-6 T-ball, 7-8 coach pitch, and 9-10 and 11-12 year old leagues.

VFW Teener and Legion Baseball

13-14 and 15-16 year old VFW Teener teams play league in eastern SD hosting games at the Teener Diamond located in Baughman/

Belatti Park. American Legion play home games at Flynn Field Several region and state titles have been won by Madison teams.

Madison Broncos

The Broncos are a local amateur baseball team playing out of the Corn Belt League with home games being held at Flynn Field.

Adult Softball

The Adult Men's Softball, Adult Women's Softball and the Adult Co-Ed Softball Associations all host their games at the Thue Softball Complex.



STADIUM
Sports Grill

Daily Specials!

- Monday - \$2.00 off any Burger*
- Tuesday - Tall Taps at Short Prices
- Wednesday - Wing Night 5 PM-10 PM
10 PM to Close \$1.25 Well Drinks
& \$2.00 Short Domestic Taps
- Thursday - Bucket Night 6 PM to Close
\$11 Buckets
- Saturday - \$2 off Bloody Marys
and Double Screwdrivers 11 AM - 5 PM
- Sunday - All Day Bucket Special \$10
Progressive Happy Hour M-F 2-6 pm

**Where Sports
Fans Meet!**

Pool • Games • Casino • Darts •

Lunch Buffet **Open Daily**
Mon-Fri • 11am-2pm at 11:00am

*Great Food
and Ice Cold Beer!*

DOWNTOWN MADISON
427-9521 • 203 North Egan • Madison, SD





Madison Swim Team competing



2014 State Gymnastic Team - Madison High School

SoccerMadison

SoccerMadison is a non-profit corporation dedicated to creating the best soccer association in the state. Under the umbrella of US Youth Soccer and SD Soccer Association, SoccerMadison offer recreational soccer in the fall and spring for youth ages 4-18. For more information, visit www.SoccerMadison.org.

Madison Swim Team

Swimmers from 1st grade to Seniors can improve their skills with organized workouts by the coaching staff in the Community Center pool. Members of the team compete statewide in swim meets. The swim club is non-profit and associated with South Dakota Swimming, Inc. and sanctioned by the USA Swimming Federation. Contact Jennifer Williams at (605) 480-1799 for more information.

Madison Tennis Association

Madison Tennis Association (MTA) is a non-profit association and is associated with the USTA. MTA has programs for all ages (youth through seniors). For youth, the summer program is held during the day, and lessons for all ages including adults plus fun nights. Madison has excellent complexes, with eight courts at the high school, and one court at Westside Park. MTA holds two youth tournaments each summer. Visit www.tennismadison.com for more information.

Bowling

Madison USBC Bowling Association was founded in 2010. Youth to adult bowling

leagues and play are available throughout the year. Contact Cherry Lanes at 256-4954 for more information.

Gymnastics

Madison's successful state titles start with many learning fundamentals through youth gymnastics programs and lessons at the Madison Gymnastics Center.

Wrestling

Madison also has Youth Wrestling for children, and supports individual and team development and competition.

The advertisement features the Dakota ETHANOL logo at the top, with a blue arrow pointing right and a water drop icon. Below the logo is a photograph of a farm with several large metal silos and a blue sky. The text "Supporting the agricultural industry in the lakes' area and beyond." is written in white over the bottom part of the image. At the bottom, a blue banner contains the phone number "1-888-539-2676" and the website "www.dakotaethanol.com". Below the banner, the address "46269 SD Hwy. 34, PO Box 100, Wentworth, SD 57075" is listed in white text.

Dakota
ETHANOL

Supporting the
agricultural industry in the
lakes' area and beyond.

1-888-539-2676
www.dakotaethanol.com

46269 SD Hwy. 34
PO Box 100
Wentworth, SD 57075

Cultural/Museums



Home of the Chamber & Lake Area Improvement Corporation

DEPOT MUSEUM

The Madison Depot Museum was added to the National Register of Historic Places in November of 1989. The Depot has been preserved and displays a number of railroad memorabilia from when it served the region as an intermediate size station of the Milwaukee Road Railroad. The museum is located in a community room of the Depot. The last passenger train departed Madison in 1953 and the station closed in 1979. The Depot was restored and reopened in 1990 as the home of the Greater Madison Area Chamber of Commerce and Lake Area Improvement Corporation. The grounds include a picnic area, green space and a memorial brick wall of the contributors.



Depot Museum & Community Room



Delivering safe, affordable and reliable wholesale power to our
25 member electric distribution systems in eastern
South Dakota and western Minnesota for over 60 years





Local Artist John C. Green



Late Summer Pelican Family on Lake Madison

JOHN GREEN ART STUDIO

John Green's outdoor and scenic paintings capture the spirit of his native state. As an established artist Green, a lifelong resident of the Madison area, recently celebrated his 49th year as a professional artist and has earned recognition in the art community for his accomplishments in wildlife art. In 2013 Green was also named Sioux Empire Conservationist of the Year.

In recognition of Green's support to Madison in sharing his talents, the John

Green Art Studio opened in July 2002 with donations received by the Madison Community Foundation.

Downtown Madison is a proud home of the studio where the artist continues his creations, plus a public gallery where award winning original oil paintings and prints are displayed.

The gallery, located at 111 S. Egan Ave., was created to show appreciation for a giving heart and to open the doors for future artists in the Madison community. The John Green Art Studio strives to keep the arts alive.

MADISON AREA ARTS COUNCIL

For over 51 years, the Madison Area Arts Council has provided quality arts and cultural programming from outstanding regional, national, and international artists, musicians, and speakers for the Madison community. Their recently renovated downtown home, The BrickHouse Community Arts Center, serves as an intimate live venue, hosting musicians, gallery exhibitions, and a variety of community programs and benefits.



Thomas Hentges Burlap Wolf King



First Madison Insurance

*Large enough to serve you,
small enough to care.*

**Auto•Home•Farm
Health•Life•Commercial**

PO Box 367 605-256-6634
Madison, SD 57042 605-256-6635 FAX

1-800-288-5674
www.firstmadisoninsurance.com





U.S. Senator Mundt Replica Office



Karl E. Mundt Library & Foundation

KARL E. MUNDT HISTORICAL & EDUCATIONAL FOUNDATION

The Karl E. Mundt (KEM) Historical & Educational Foundation is one of South Dakota's senatorial foundations and was founded in 1963. Karl E. Mundt was South Dakota's longest serving national politician, elected to the U.S. House of Representatives in 1938 and retiring from the U.S. Senate in 1972.

The KEM Foundation houses an archive of over 1.9 million documents, photos and artifacts from Mundt's career and a replica of his Washington office. Modeled after the Freedom Foundation in Valley Forge, Pennsylvania, the KEM Foundation offers researchers, educators, historians and the general public a variety of resources, programs, services and meeting space.

Located in the lower level of the Mundt Library building, on 8th and Egan Ave., the Foundation is open to the public Monday through Friday, 8:00 a.m. to 5:00 p.m. <http://mundt.dsu.edu> or 256-5211.

MAKING A HOUSE YOUR HOME
...it's what we do



Dakotaland
FEDERAL CREDIT UNION

www.DakotalandFCU.com | 605.256.6511

savings • checking • loans • real estate • credit cards • business lending • online banking





Smith Zimmermann Museum Entrance



Parlor room replica at the Smith Zimmermann Museum

SMITH ZIMMERMANN MUSEUM

Explore the past at the Smith Zimmermann Museum, a pioneer museum which reflects the history of Lake County as well as the early development of eastern South Dakota.

The collection includes home furnishings, period rooms, tools, farm equipment and early forms of transportation. The museum, found at 221 NE 8th St., features an important Lake Madison Chautauqua collection and serves as a resource for genealogical research.

The Smith Zimmermann Museum is open year-round, Tuesday through Friday, noon to 4 p.m., or call 256-5308 for an appointment. www.smith-zimmermann.dsu.edu.



Library Park



**Know what's below.
Call before you dig.**

Stay safe! Call '811' 48-hours before you dig to locate underground utility lines.



A safety message from your local Touchstone Energy Cooperative.

1-800-234-1960
www.siouxvalleyenergy.com

Sioux Valley Energy is an equal opportunity provider and employer.

256-3888
121 S Egan Ave • Madison
Madison Realty Inc.  
www.madisonsdrealty.com



JEFF LECHNER
270-1764
Broker/Owner®



MARILYN MOOTHART
270-1840



DICK ANDERSON
366-5115



JEFF PEARSON
480-0470



Thank you for shopping Madison



6 Inch
Sub Sandwich
\$2.49

1104 NW 2nd Street • Madison, SD
605-256-9711
www.onestopmadison.com

Expires 3-31-2016

Thank you for shopping Madison

**BUY ONE BREAKFAST COMBO
GET ONE
50% OFF**



610 S. WASHINGTON AVENUE, MADISON
605-256-4441

Expires 3-31-2016

Thank you for shopping Madison



Welcome to the end of the day!
10% off
your stay at AmericInn of Madison, SD

504 10TH STREET SE, MADISON, SD 57042
P (605) 256-3076 F (605) 256-3085
MADISON.SD@AMERICINN.COM
(800) 634.3444 AMERICINN.COM

*GOOD ONLY AT THIS LOCATION. OFFER EXPIRES 3/31/2016.
©2015 AMERICAN INTERNATIONAL, LLC

Thank you for shopping Madison

**Celtic
Clippers**



211 SW 1st St
Madison, SD 57042
605.951.7689
www.celticclippers.com

10% off
Collars
& Leads



Expires 3-31-2016

Thank you for shopping Madison

**Central Business
Supply Inc.**

"Where Business is our Middle Name"
Furniture-Design-Supplies-Service
115 S. Egan Ave. Madison
605-256-6637
www.centralbusinesssupply.com

10% Off
your next purchase*

*excludes ink cartridges and toner
Expires 3-31-2016

Thank you for shopping Madison



Buy a 6" Pizza
and get a 20 Oz.
Fountain Pop **FREE**

Classic Corner
Convenience Store



500 SE 10th St, Madison • 605-256-0338
Open 7 days a week - 24 hours a day
Expires 3-31-2016

Thank you for shopping Madison

SPECIAL GUEST RATES

\$12⁰⁰
FAMILY
DAY PASS

\$6⁰⁰
ADULT
DAY PASS

*Fitness Fun for
the whole family!*



The Community Center
256-5837

500 NE 11th ST. • Madison, SD
www.communitycenter.dsu.edu

Expires 3-31-2016

Thank you for shopping Madison

FREE SUNDAE



**WITH THE PURCHASE OF A
BASKET OR VALUE MEAL**

117 NE 2nd St. • Madison, SD
f (605) 256-4042

Expires 3-31-2016

Thank you for shopping Madison

EL VAQUERO



Authentic Mexican Restaurant

\$1.00 off
any one meal

316 NE 2nd St. Madison • 427-0084
Expires 3-31-2016

Thank you for shopping Madison

**\$100
OFF**

Frames and
Premium Lenses*



*See glass or contactlens

The EyeCare Center

302 N. Harth Ave., Madison
256-6911 or 1-800-994-3926
www.eyemadison.com

Expires 3-31-2016

Thank you for shopping Madison

**FOUR
SEASONS
FLEA MARKET**
and
THE 5th SEASON
Boutique and Bookstore

20% Off
any one boutique item

223 North Egan Avenue, Madison
605-256-6696
www.4seasonsfleamarket.com

Expires 3-31-2016

Thank you for shopping Madison

Celebrating Over 20 Years of Fine Dining.

Hillside Resort
RESTAURANT AND LOUNGE



**Buy One Get
One Half Price**
ANY APPETIZER

Limit one offer per table

(605) 256-9558 • www.hillside-resort.com
46042 - 238th Street, Wentworth
Located on the southeast side of Lake Madison
Expires 3-31-2016

Thank you for shopping Madison!

\$20 OFF

Personal Computer Repair
or purchase of new Dell computer.

PC Sales + Service + Business IT

Infotech
SOLUTIONS, LLC

605.427.0555 | www.infotechsd.com
Office Hours: M-F 9am-5pm

700 S. Washington, Madison

Expires: 3-31-16

Thank you for shopping Madison

MADISON

ACE
The helpful place.

HARDWARE

\$5.00 off

One gallon of the
New Valspar Paint Line

400 South Egan Avenue, Madison
605-256-3981 • www.acehardware.com

Expires: 3-31-2016

Thank you for shopping Madison

**Madison
County Club**

45152 233rd St. Madison

605-256-3991

**BUY ONE GREEN FEE
GET ONE GREEN FEE**

FREE

an reservation included
www.madisongolfsd.com

Expires: 3-31-2016

Thank you for shopping Madison

\$7.00

Daily Leader e-Edition

All Access. Anywhere. Anytime.

Madison Daily Leader

(605) 256-4555

214 S. Egan Avenue

PO Box 348

Madison, SD 57042

www.DailyLeaderExtra.com

Expires: 3-31-2016

Thank you for shopping Madison

FREE

32 oz. Fountain Soda

with a \$10.00 gas purchase

Local
ZIP
57042

Madison Discount Liquor

123 NW 2nd St. • Madison, SD
605-256-8870

Expires: 3-31-2016

Thank you for shopping Madison

**Madison
Instant
Printing**

BUY ONE COLOR COPY

AT REGULAR PRICE

GET ONE FREE

605-256-4002

109 N. EGAN AVENUE, MADISON

Expires: 3-31-2016

Thank you for shopping Madison



madison vision clinic

411 SE 10th Street, Madison, SD

605-256-2020

50% off

a frame with lens purchase

*some restrictions apply

www.madisonvisionclinicsd.com

Expires: 3-31-2016

Thank you for shopping Madison

**Buy any Drink
Over \$3 and Get
Second Half Off**

includes alcoholic and non-alcoholic drinks

Mochavingo
downtown

100 S. Egan Ave. Madison

605-556-1020

www.madisonmochavingo.com

Expires: 3-31-2016

Thank you for shopping Madison

MONTGOMERY'S

25% OFF

ANY ONE REGULAR PRICED ACCESSORY
cannot be combined with any other offer

605.256.4000

747 WASHINGTON AVE. MADISON
MONTGOMERYS.COM

Expires: 3-31-2016

Thank you for shopping Madison

FREE

Dish of "Ice Cream of the Month"
with any lunch or dinner item

Nicky's
RESTAURANT & LOUNGE

www.nickysrestaurant.com

605-256-3791

West Hwy. 34, Madison, SD

Expires: 3-31-2016

Thank you for shopping Madison

The Pampered Chef
discover the chef in you.

FREE DIRECT SHIPPING

ON ORDERS OF \$30 OR MORE

(Cannot be combined with any other offers)

Rita Feldhaus, Independent Consultant

(605) 270-4432 or fritz_rita@hotmail.com

www.pamperedchef.biz/RitaFeldhaus

Expires: 3-31-2016

PIZZA - CRICKET - BUFFET - DELIVERY

Thank you for shopping Madison

\$1.00 off
one adult buffet

Pizza Ranch

1111 NW 2nd, Madison, SD

605-256-3333

www.pizzaranch.com

Expires: 3-31-2016

#4650

Thank you for shopping Madison

15% off
In Store School Apparel

Power Promotions

www.poweronup.com
112 N. Egan Ave., Madison, SD
605-256-2049

*Some restrictions apply. does not include letterman jackets
Expires 3-31-2016

Thank you for shopping Madison

**BUY ONE TRAIN RIDE
GET ONE FREE**



PRAIRIE VILLAGE
35209 Hwy 34, Madison, SD
605-256-3644 • www.prairievillage.org

Expires 3-31-2016

Thank you for shopping Madison

\$25.00
off when you spend
\$150 or more.

*Cannot be combined with any other offer.

Since 1957
PROSTROLLO
automall.com

HWY 34 BYPASS MADISON, SD
605-256-9111 • 1-800-777-4146

★★★★★
Expires 3-31-2016

THANK YOU FOR SHOPPING MADISON

Since 1955
PUB HOUSE
CRAFT BEER • COCKTAILS • DINING

\$2 OFF
all regular
priced flatbreads!

Expires: 3-31-16

Downtown, Madison, SD • MadisonPubHouse.com

Thank you for shopping Madison

Free Fountain Drink
with a \$5.00 minimum meal purchase



Sportsman's
steakhouse & lounge

305 E. Center St. • Madison, SD
605-256-6376

www.facebook.com/pages/Sportsmans-Steakhouse-Lounge
Expires 3-31-2016

Thank you for shopping Madison

Spend \$25.00
\$5.00 off
GET One In Only

STADIUM
Sports Grill

Where Sports Fans Meet!

DOWNTOWN MADISON
203 North Egan • Madison • 427-9521

Expires 3-31-2016

Thank you for shopping Madison

20% OFF
one regular priced item
*some exclusions do apply.

www.stansapparel.com

Stan's
Men's & Women's Apparel
605-256-2728
105 N. Egan Ave., Madison, SD

Expires 3-31-2016

Thank you for shopping Madison

Super 8

10% off
your next stay at Madison Super 8

Call for availability and reservations.
Not valid on holidays or with any other offers.

219 N. Highland • Madison, SD
(605) 256-6931 • 1-800-800-8000

www.super8.com Expires 3-31-2016

Thank you for shopping Madison

TACO JOHN'S
UNWRAP THE ORIGINAL

**FREE Small
Potato Oles***
with any food
purchase



223 N. Josephine • Madison, SD
www.TacoJohns.com
605-256-2587

Expires 3-31-2016

Thank you for shopping Madison

**FREE
DQ TREAT**
Redeemable at the church office.

Trinity
Lutheran Church, 2204
Morning Faith Week, Evening Faith Week
203 N. Harth Ave., Madison, SD
605-256-7772 • www.tlcmadison.com

Expires 3-31-2016

Thank you for shopping Madison

**Unique
BOUTIQUE**
consignment LLC

10% off
any one regular price item

1229 NW 2nd Street, Madison, SD
605-427-0707
uniqueboutiqueconsignment@yahoo.com

Expires 3-31-2016

Thank you for shopping Madison

URBAN JUNK
etcetera

REJUVENATE YOUR DECOR

10% Off
any item

217 N Egan Ave • Madison • 270-4344

Expires 3-31-2016

— Welcome To Our Lakes —

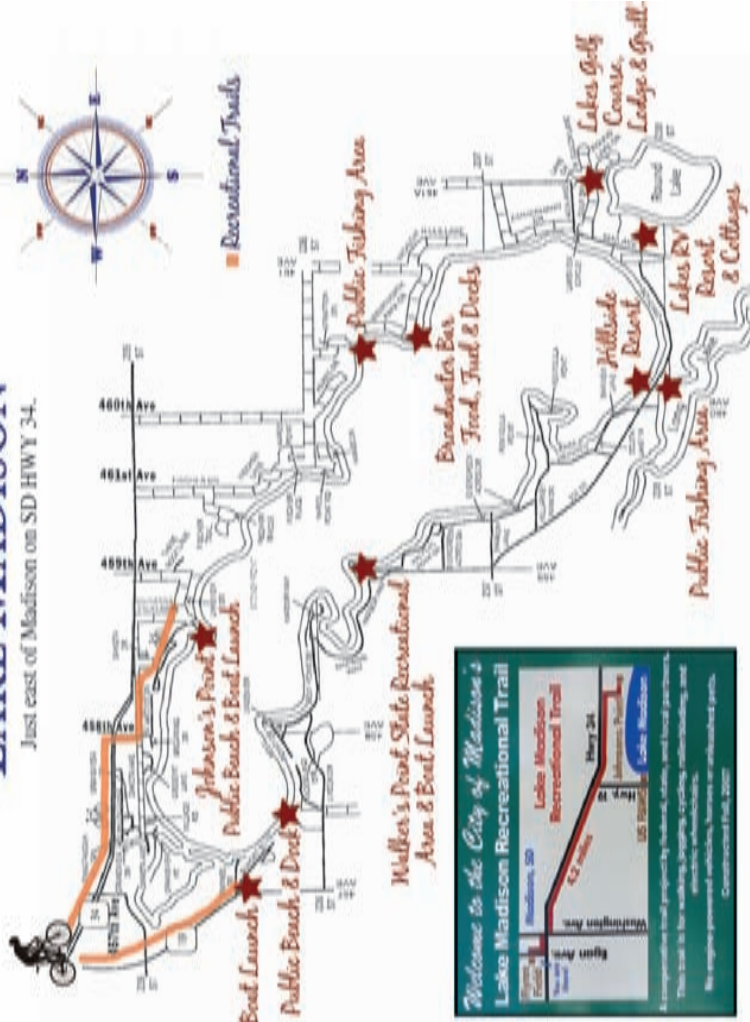
LAKE HERMAN

Just west of Madison on SD HWY 34.



LAKE MADISON

Just east of Madison on SD HWY 34.





Corn Harvest – Madison Farmers Elevator



Manitou Gehl – Madison H.S. Tour Madison Manufacturing Days

Unless otherwise noted, all addresses are Madison, SD 57042 and area code is (605).

AG/INDUSTRY

A.H. Meyer & Sons, Inc.

PO Box 98, Winfred SD 57076

485-2221 • www.ahmeyerandsons.com

Avery Brothers, LLC

2420 Correctionville Rd., Sioux City IA 51102

(712) 252-2480 • www.averyoutdoor.com

B&G Transportation, Inc.

433 S.E. 12th St., Madison SD

256-9105 • www.bgtrans.com

Dakota Ethanol, LLC

46269 Hwy 34, Wentworth SD 57075

483-CORN(2676) • www.dakotaethanol.com

East River Electric Power Cooperative

121 S.E. 1st St., Madison SD

256-4536 • www.eastriver.coop

Falcon Plastics, Inc.

605 S.W. 7th St., Madison SD

256-6654 • www.falconplastics.com

Farmers Ag Center, LLC

1425 S.W. 3rd St., Madison SD

256-6565 • www.farmersagcenter.com

Global Polymer Industries, Inc.

1001 S.E. 12th St., Madison SD

256-5130 • www.globalpolymer.com

Heartland Consumers Power District

432 S.E. 12th St., Madison SD

256-6536 • www.hcpd.com

Helena Chemical Company

620 S.W. 3rd St., Madison SD

256-3973 • www.helenachemical.com

James River Equipment

1340 John Deere Circle, Madison SD

256-4575 • www.jrequip.com

OPEN 7 DAYS A WEEK • 24 HOURS A DAY

FREE DELIVERY

Eat in or Carry Out

Classic Corner
Convenience Store

"Any Time is Pizza Time"

Check out our Daily and Monthly Specials!

500 SE 10th St., Madison, SD 57042 • 605.256.0338 • Fax 605.427.0480





Excellent Golfing Options at The Lakes & Madison Country Club



Water Recreation on Lake Madison

Krug Products, Inc.

419 S.W. 2nd St., Madison SD
256-2851 • www.krug-products.com

Lake County International

45313 SD Hwy 34, Madison SD
256-3521 • www.lakecountyintl.com

Lakeco Crop Services, Inc.

46461 230th St., Wentworth SD 57075
480-4299

Madison Bin City, LLC/American Edge Grain

23557 Farmers Ave., Madison SD
(612) 805-7053 • www.americanededgegrain.com

Madison Farmers Elevator Co.

222 N. Farmer Ave., Madison SD
256-4584 • www.madisonfarmerelevator.com

Madison Livestock Sales Co., Inc.

1209 E. Center St., Madison SD
256-9156 • www.madisonlivestock.com

Manitou Group – Gehl Company

915 S.W. 7th St., Madison SD
256-6622 • www.gehl.com

Meyer Farms

6644 Peninsula Lane, Wentworth SD 57075
334-0333

Mustang Seeds, Inc.

306 S. Washington Ave., Madison SD
256-6529 • www.mustangseeds.com



Lake Madison Peninsula Point

NorthWestern Energy

104 N. Egan Ave., Madison SD
256-4526 • www.northwesternenergy.com

Persona, Inc.

1001 S.W. 1st St., Madison SD
256-0658 • www.persona-inc.com

Peterson Farms Seed

104 N.W. 5th St., Madison SD
480-0917 • www.petersonfarmsseed.com

Powder Specialties, LLC

311 S. Union Ave. Suite 100, Madison SD
660-6424 • www.facebook.com/PowderSpec

PPD UHMW Industries

1810 N.E. 3rd St., Madison SD
256-3533 • www.ppdgroup.com

Raven Industries – Engineered Films Division

500 12th St. S.E., Madison SD
(800) 578-5257 • www.ravenefd.com

Raven Industries, Inc.

1520 N.E. 3rd St., Madison SD
256-4339 • www.ravenind.com

Rosebud Manufacturing

701 S.E. 12th St., Madison SD
256-4561 • www.rosebudmfg.com

Schaefer Belgian Farms, Inc.

23234 441st Ave. A., Winfred SD 57076
485-2630

SD Association of Rural Water Systems

203 W. Center St., Madison SD
556-7219 • www.sdarws.com

Sioux Valley Energy

47092 SD Hwy 34, Colman SD 57017
534-3535 • www.siouxvalleyenergy.com

SnoDepot

311 S. Union Ave. Suite 200, Madison SD
(888) 815-4522 • www.snodepotusa.com

Wilbur Ellis – Chester

PO Box 99, Chester SD 57016 • 489-2171
ag.wilburellis.com/Locations/Pages/Chester.aspx

ATTRACTIONS/RECREATION

Bird's Nest, Inc., The

44524 236th St., Winfred SD 57076 • 480-5105
www.thebirdsnestinc.com/web/index.php?siteid=257

Cherry Lanes

1413 N.W. 2nd St., Madison SD
256-4954 • www.facebook.com





YOUR DESTINATION FOR A LIFETIME ...THE LAKES RESORT

A FULL-SERVICE RESORT ON LAKE MADISON



The Lakes Golf Course
605-483-3535



The Lakes Bar and Grill
605-483-3580



The Lakes Lodge
605-483-3544



The Lakeshore Vacation Cottages
605-483-3800



The Lakes Housing Development
605-270-3054



Lakeshore RV Resort
605-483-3800

WWW.GOLFATTHELAKES.COM

 LAKES RESORT





Steam Carousel – Historic Prairie Village



Lake Madison – Peninsula Bay

Community Center, The

500 N.E. 11th St., Madison SD
256-5837 • www.communitycenter.dsu.edu

Dakota Prairie Playhouse

1205 N. Washington Ave., Madison SD
256-5666 • www.departments.dsu.edu/dpp

Depot Museum

315 S. Egan Ave., Madison
256-2454 • www.chamberofmadisonsd.com

Horseshoe K. Ranch

23539 365th Ave., Kimball SD 57355
778-6714 • www.horseshoekranch.com

John Green Art Studio

111 S. Egan Ave., Madison SD
256-3610 • www.johngreenartgallery.com

Laddusaw Agency-Ladditude Cruises, LLC

6624 Lenola Hts., Wentworth SD 57075
359-1353

Lake Herman State Park

23409 State Park Dr., Madison SD
256-5003 • www.sdparcs.info

Lakes Golf Course, The

19 Golf Dr., Wentworth SD 57075
483-3535 • www.golfatthelakes.com

Madison Golf & Country Club, Inc.

45152 233rd St., Madison SD
256-3991 • www.madisongolfsd.com

Madison Tennis Association

PO Box 345, Madison SD
www.tennismadison.com

Prairie Historical Society – Prairie Village

45205 SD Hwy 34, Madison SD
256-3644 • www.prairievillage.org

Smith-Zimmermann Museum

221 8th St. N.E., Madison SD
256-5308 • www.smith-zimmermann.dsu.edu



**Your One Stop for Fishing,
Hunting & Camping!**



Complete Selection



Best Subs Around



- Live Bait • Licenses • Ammo
- Tackle • Ice • Cold Beer

Jct. Hwy 81 & 34 • www.onestopmadison.com • 605-256-9711





Historic Prairie Village - Annual Car Show, 1st Weekend in August

Sodak's Marina, LLC

45902 Sharon Ln., Wentworth SD 57075
256-9222 • www.sodakmarina.com

The Edge 24 Hour Fitness

720 S. Washington Ave., Madison SD
556-1010 • www.facebook.com/theedgemadisonsd

Top Gun Hunting Ranch, LLC

23788 433rd Ave., Howard SD 57349
480-2356 • www.topgunhunt.com

AUTOMOTIVE

CarQuest Auto Parts

305 S.W. 1st St., Madison SD
256-3592 • www.carquest.com

Cars for Les

455 S. Highland Ave., Madison SD
256-9752 • www.carsforles.com

F&M Coop Oil

45316 SD Hwy 34, Madison SD
256-4516

Interlakes Sport Center

702 S.W. 10th St., Madison SD
256-3556 • www.interlakesportcenter.com

Jack's Service

209 S. Highland Ave., Madison SD
256-4347

Lake Herman Auto Sales, Inc.

202 N.W. 2nd St., Madison SD
427-2886 • www.lakehermanauto.com

Parks Marina, Inc.

4300 N. Cliff Ave., Sioux Falls SD 57104
335-6766 • www.parksmarina.com

Prostrollo All-American Auto Mall

1001 S. Washington Ave., Madison SD
256-9111 • www.prostrolloautomall.com

ESTABLISH A LIFETIME OF

healthy vision

The Eyecare Center

Dr. Mike Brooke & Dr. Jodie Larson

302 N Harth Ave., Madison
256-6911 or 1-800-994-3926
www.eyemadison.com

Madison Vision Clinic

Dr. Ashley Crabtree

411 SE 10th Street, Madison
256-2020 or 1-800-573-2324
www.madisonvisionclinicsd.com



find us on
facebook!





Madison Golf & Country Club – Holes #8, 9 and 12

Pulford's Auto Parts – NAPA

427 N.W. 2nd St., Madison SD
256-4511 • www.napaonline.com

Roger's Service & Exhaust Pros

930 S.W. 4th St., Madison SD
256-6762

Stemper Auto Body

23416 456th Ave., Madison SD
256-3255 • www.stemperautobody.com

Sturdevant's Auto Parts

218 S. Van Eps Ave., Madison SD
256-6666 • www.sturdevants.com

Good Shepherd Free Lutheran Church

120 S.W. 2nd St., Madison SD
427-9400 • www.facebook.com

Grace Episcopal Church

306 N.W. 3rd St., Madison SD
256-2325 • www.madison-episcopal.org

Living Hope Wesleyan Church

520 N.W. 3rd St., Madison SD
427-9235 • www.livinghopewesleyan.org

River of Life Church

610 N.E. 3rd St., Madison SD
256-2054 • www.madisonriveroflife.org

St. John Lutheran Church

122 N. Grant Ave., Madison SD
256-4855 • www.sjlmadison.com

St. Thomas Aquinas Church

321 N. Van Eps Ave., Madison SD
256-2304 • www.stthomasmadison.parishesonline.com

CHURCHES

First Presbyterian Church

400 N. Egan Ave., Madison SD
256-2588

**You Name It
We'll Imprint It!**

- Screen Printing • Embroidery
- Promotional Products
- Awards & Trophies
- Banners • Yard Signs
- Full Color Canvas Prints

Order custom gear for

- Reunions • Groups
- Corporate • Schools
- Churches • Events

**Power
Promotions**

www.poweronup.com

112 N. Egan Ave., Madison, SD 57042

605-256-2049

Open Mon-Fri 9:00 - 5:30 • Saturday 9:00 - 1:00





Madison Golf & Country Club – Clubhouse



Dakota State University – Trojan Days

Trinity Lutheran Church

203 N. Harth Ave., Madison SD
256-2771 • www.tlcmadison.com

United Methodist Church

304 N. Egan Ave., Madison SD
256-2162 • www.madisonumc.com

West Center Baptist Church

322 W. Center St., Madison SD
256-3027 • www.westcenterbaptist.com

CONSTRUCTION/HOME REPAIR

Amert Construction Co., Inc.

PO Box 469, Madison SD
256-6655

Barger Construction

6109 Dakota Ave., Madison SD
256-2001

Barger Electric

203 S.W. 1st St., Madison SD
256-2511

Bob's Electric of Madison, Inc.

211 S.E. 3rd St., Madison SD
256-6828 • www.facebook.com

Bob's Plumbing & Drain Cleaning

109 N. Blanche Ave., Madison SD
291-9461

C-Lemme Companies, LLC

3408 S. Sycamore Ave., Sioux Falls SD 57110
335-8926 • www.c-lemme.com/about

Custom Touch Homes

411 S.E. 12th St., Madison SD
427-4663 • www.customtouchhomes.com

Dakota Fixture & Cabinet Co., LLC

45753 237th St., Madison SD
256-3707 • www.soliddfc.com



Madison's premium source for
new home and commercial
construction, additions, and
remodeling.

605-256-3262

www.keppen.com

PO Box 410, Madison, SD 57042

**KEPPEN
CONSTRUCTION**





Hobo Marlin's Pumpkin Train



Madison Bulldog Football



Water Sports on Lake Madison, Herman & Brant Lakes

designArc architecture + design

408 4th St., Brookings SD 57006
692-4008 • www.teamdesignarc.com

Dietterle Construction

922 Heatherwood Ave., Madison SD
256-9456

Ekern Home Equipment – Plumbing & Heating

121 2nd Ave. W., Flandreau SD 57028
997-3132 • www.ekernsd.com

Fred Lebahn Construction

23146 US Hwy 81, Madison SD
256-2702

J. Martin Plumbing

23620 456th Ave., Madison SD
270-1656

Johnson Brothers Excavation, Inc.

PO Box 185, Madison SD
256-3955 • www.johnsonbrothersexcavation.com

Keppen Construction

417 S. Washington Ave., Madison SD
256-3262 • www.keppen.com

Lake County Plumbing, LLC

PO Box 91, Wentworth SD 57075
(301) 633-3849 • www.lakecountypumbing.net

Michael Johnson Construction, LLC

45327 SD Hwy 34, Madison SD
256-4195 • www.michaeljohnsonconstruction.com

Myrl & Roy's Paving, Inc.

1300 N. Bahnsen Ave., Sioux Falls SD 57103
334-3204 • www.myrlandroypaving.com

Superior Homes, LLC

23430 456th Ave., Madison SD
256-6588 • www.superiorhomesllc.com

Williams Brothers Construction

45548 SD Hwy 34, Madison, Madison SD
480-6890 • www.williamsbrothersconstruction.net

*Wohlenberg
Ritzman & Co.*
LLC
certified public accountants

Madison Office 112 South Egan Ave. PO Box 505 Madison, SD 57042 605-256-9165	Yankton Office 207 Douglas Ave. PO Box 1018 Yankton, SD 57078 605-665-4401
---	---

Sioux Falls Office
507 West 10th St.
PO Box 876
Sioux Falls, SD 57101
605-336-0372

1-800-456-0889
email: wrc@wrccpa.com

**Lewis**
Your first stop

Store Hours: Mon-Sun: 8am-9pm
Pharmacy Hours: Mon-Sun: 9am - 7pm
Sat: 9am - 5pm Sun: 10am - 2pm

605-256-3733

Where you'll feel better.
Even before you take your prescriptions.

741 S. Washington Ave. • Madison SD





Annual Chamber Golf Classic – 3rd Friday in June



Dakota State University Campus – Beadle Hall

Winter, Inc.

110 32nd Ave., Brookings SD 57006
256-6211 • www.winterinc.net

Be Online, Inc.

1533 N.W. 2nd St., Madison SD
427-2000 • www.beonlineinc.com

Dakota State University

820 N. Washington Ave., Madison SD
256-5112 • www.dsu.edu

ECCO, Inc.

706 S.W. 7th St., Madison SD
256-6628 • www.eccoinc.org

Madison Central School District

800 N.E. 9th St., Madison SD
256-7700 • www.madison.k12.sd.us

Madison Christian School

45369 234th St., Madison SD
427-0109 • www.madisonsd.com/madisonchristian

St. Thomas Aquinas School

401 N. Van Eps Ave., Madison SD
256-4419 • www.st-thomas.k12.sd.us

EDUCATION

FINANCIAL INSTITUTIONS

Dakotaland FCU Interlakes Branch

1004 S. Washington Ave., Madison SD
256-6511 • www.dakotalandfcu.com

East River Federal Credit Union

220 S. Harth Ave., Madison SD
256-8145 • www.eastriverfcu.com

First Bank & Trust

120 N. Egan Ave., Madison SD
256-9192 • www.bankeasy.com

Most welcome wagons deliver pie.

OURS DELIVERS THE WORLD.

From all of us at Midcontinent Communications; welcome to Madison.

You'll probably want to get your Internet hooked up fast...well, PCmag.com says we have America's fastest Internet, Midco Xstream® Wideband, with speeds up to 200 Mbps. And nobody comes close when it comes to cable. From TV Everywhere to TiVo® Whole Home DVRs, we've got what you want and more, including 100+ HD channels, and our very own regional sports channel, Midco Sports Network®. If you happen to be opening a business, Midcontinent Business Solutions™ offers phone, Cable TV, internet, cable advertising, and expert consulting to help you get exactly what you need. Of course, it's all connected to the Northern Plains Network® a ring of advanced fiber optic that can move mountains of data instantly.

So no, we didn't bring a pie, but with all this, we hope you'll forgive us.

1.800.888.1300 • Midco.com

A trademark of Ziff Davis, Inc. All Rights Reserved.





Madison Discovery Day – Last Saturday in July



Outlaw Tractor Pull – Prairie Village Jamboree

Great Western Bank

301 N. Egan Ave., Madison SD
256-6532 • www.greatwesternbank.com

Wells Fargo Bank

600 N. Egan Ave., Madison SD
256-4551 • www.wellsfargo.com

FINANCIAL/INSURANCE SERVICES

Ameriprise Financial

212 N. Egan Ave., Madison SD
256-4774 • www.ameriprise.com

Assist Financial Services

1533 N.W. 2nd St., Madison SD
256-2173 Ext. 1001 • www.assistfinancialservices.com

CU Mortgage Direct

220 S. Harth Ave., Madison SD
256-8285 • www.cumortgagedirect.com

Edward Jones Investments

423 N.W. 2nd St., Madison SD
256-3550 • www.edwardjones.com

Farm Bureau Financial Services

1106 N.W. 4th St., Madison SD
256-6501 • www.fbfs.com

Farm Credit Services of America

PO Box 88737, Sioux Falls SD 57109
(800) 658-3953 • www.fcsamerica.com

Farmers Insurance-Herr Insurance Agency

120 E. Center St., Suite 1, Madison SD
256-6334 • www.farmersagent.com/lherr

Financial Distributors, LLC

6344 Harbor Way, Wentworth SD 57075
351-5060 • www.financialdistributorsllc.com

First Madison Insurance

109 S. Egan Ave., Madison SD
256-6634 • www.firstmadisoninsurance.com

GSN Insurance, LLC

215 N. Egan Ave., Madison SD
556-0242 • www.gsnins.com/About_US.html

H&R Block

210 N. Egan Ave., Madison SD
256-4204 • www.hrblock.com

Insurance Market Rentals

107 N.W. 2nd St., Madison SD
427-1049

Jason Maxwell, CPA

225 N. Egan Ave., Madison SD
256-4542 • www.jasonmaxwellcpa.com

King Insurance Agency, Inc.

117 N. Harth Ave., Madison SD
427-0641 • www.kinginsurancesd.com

Kundert-Williams Insurance

122 W. Center St., Madison SD
256-6608

Landeen Insurance Services

6217 N. Lakeside Dr., Madison SD
256-4600 • www.landeeninsuranceservices.com

Schwader Tax Service

1106 N.W. 4th St., Madison SD
427-3133 • www.schwadertaxservice.com

State Farm Insurance – Randy Schaefer

730 S. Washington Ave., Madison SD
256-2363 • www.statefarm.com

Thrivent Financial

1527 N.W. 2nd St., Madison SD
256-4609 • www.thrivent.com

Waddell & Reed

207 N. Egan Ave., Madison SD
427-7526 • www.waddell.com

Weber Abstract Company

112 S. Egan Ave., Madison SD
256-4640 • www.weberabstract.com

Wohlenberg Ritzman & Co., LLC

112 S. Egan Ave., Madison SD
256-9165 • www.wrccpa.com



Madison Country Club - Clubhouse



Celebrating Over 20 Years of Fine Dining.

Hillside Resort

**RESTAURANT AND LOUNGE
AND SEASONAL LAKE CRUISES**



Open Tuesday thru Sunday at 11 am

Certified Angus Beef & Hand-Cut Steaks

Prime Rib Served Every Friday & Saturday Evening

The Best Prime Rib Sandwiches Every

Wednesday & Sunday • Homemade Flatbread Pizza

• Burgers • Baskets • Kid's Meals • Broasted Chicken

• Seafood & Large Canadian Walleye • Appetizers • Desserts



46042 - 238th Street, Wentworth

Located on the south side of Lake Madison.

From AmericInn 2 miles East 2 1/2 miles South and 3 1/2 miles East

(605) 256-9558 • www.hillside-resort.com

Join us for a
Lake Madison Cruise

Call for reservations
and more information

(605) 256.9558

or to book private cruises

(605) 359.1353





Dakota State University – Trojan Field



Baughman/Belatki Baseball and Softball Complex

Yost Agency, Inc.

1004 S. Washington Ave., Madison SD
256-6202 • www.yostagency.com

HEALTHCARE SERVICES

Avera Home Medical Equipment

903 N. Washington Ave., Madison SD
256-2783 • www.avera.org

Bethel Lutheran Community

1001 S. Egan Ave., Madison SD
256-4539 • www.bethelcommunity.com

Community Counseling Service

914 N.E. 3rd St., Madison SD
256-9656 • www.ccs-sd.org

Counseling Associates

726 S. Washington Ave., Madison SD
427-0110 • www.counselingassociatesmadison.com

Dakota Chiropractic Office

120 N.W. 2nd St., Madison SD
256-2964 • www.dr-caron.com

Derrill Hanson, DDS

118 W. Center St., Madison SD
256-4177

Eyecare Center, The

302 N. Harth Ave., Madison SD
256-6911 • www.eyemadison.com

Golden Living Center

718 N.E. 8th St., Madison SD
256-4531 • www.goldenlivingcenter.com

Heritage Senior Living

211 N.W. 1st St., Madison SD
256-1525 • www.heritageseniorlivingsd.com

Lakes Family Chiropractic

411 S.E. 10th St., Suite 101, Madison SD
556-2002 • www.lakesfamily.com



SUPER 8 MOTEL

219 N. Highland
Madison, SD 57042
605-256-6931 • 1-800-800-8000

www.super8.com

- Newly renovated in 2014
- All new flat screen televisions
- Wireless high-speed internet
 - HBO • Showtime
- Continental breakfast 6am – 9am
 - Next door to Pizza Ranch
- Rooms with refrigerator & microwave
- Monthly and Weekly Rates available

- Dine-In
- Delivery
- To Go



We have party rooms available
with flat screen
televisions.

Madison, SD
256-3333
1111 NW 2nd St.



www.pizzaranch.com





Lake Herman State Park – Camping and Recreation



Lake Herman State Park – Beach

Larry Green, DDS

102 N. Egan Ave., Madison SD
256-4969 • www.greenfamilydentistry.com

Madison Chiropractic Center

732 S. Washington Ave., Madison SD
256-0336 • www.madisonchiro.com

Madison Community Hospital & Clinic

917 N. Washington Ave., Madison SD
256-6551 • www.madisonhospital.com

Madison Family Dental

502 N.E. 2nd St., Madison SD
256-2670 • www.madisonfamilydental.com

Madison Vision Clinic

411 S.E. 10th St., Madison SD
256-2020 • www.madisonvisionclinicsd.com

Transforming Touch – Massage Therapy

411 S. E. 10th St. #101, Madison SD
291-6185 • www.jadaemery.com

We Care Dental

622 N. Highland Ave., Madison SD
256-6668 • www.wecaredental.com

LODGING/CAMPING

AmericInn Lodge & Suites

504 S.E. 10th St., Madison SD
256-3076 • www.americinn.com/hotels/SD/Madison

Camp Lakodia

45156 235th St., Madison SD
(877) 525-6342 • www.camplakodia.com

Lakes Lodge, The

20 Golf Dr., Wentworth SD 57075
483-3544 • www.golfatthelakes.com

Lakeshore RV Resort & Cottages

100 Silvercreek Trail, Wentworth SD 57075
483-3800 • www.golfatthelakes.com

Lori Norby
Mortgage Loan Originator • NMLS #665547

Why choose Lori Norby?
Fast & Friendly • Knowledgeable
Award Winning • Goes Above & Beyond

220 S. Harth Ave • lnorby@cumortgagedirect.com

CU Mortgage Direct LLC
NMLS# 100805 Simple Solutions, Direct Results

(605) 256-8285 • • Madison, SD • cumortgagedirect.com





Madison – Mart in Park in July



Madison Discovery Day Fun – Last Saturday in July

Super 8 Motel

219 N. Highland Ave., Madison SD
256-6931 • www.super8.com

NEWS/INFORMATION

CDI – City Directory, Inc.

PO Box 265, Belmond IA 50421
(641) 444-4468 • www.citydirectoryinc.com

Greater Madison Area Chamber of Commerce

315 S. Egan Ave., Madison SD
256-2454 • www.chamberofmadisonsd.com

KJAM Radio

101 S. Egan Ave., Madison SD
256-4514 • www.amazingmadison.com

Madison Daily Leader

214 S. Egan Ave., Madison SD
256-4555 • www.madisondailyleader.com

NON-PROFIT ORGANIZATIONS

**Brookings Habitat for Humanity
Lake County Partnership Team**

(515) 306-4718

City of Madison

116 W. Center St., Madison SD
256-7500 • www.cityofmadisonsd.com

Community Welcome Service

23373 450th Ave., Madison SD
256-6505

Domestic Violence Network

PO Box 110, Madison SD
427-7233 • www.domesticviolencenetwork.com

DSU Foundation

325 N.E. 2nd St., Madison SD
256-5693 • foundation.dsu.edu

Historic Prairie Village

Open Mother's Day - Labor Day
Monday - Saturday 10AM - 5PM • SUNDAY 11AM - 5PM
Madison, SD • 2 miles west on Hwy. 34
800-693-3644 • www.PrairieVillage.org

40 Historic Buildings, Train & Carousel Rides

May 9	Consignment Auction
June 7	Miss Prairie Village/Princess Pageant
June 12	Northern Bull Riding Tour
June 21	Prairie Village Variety Show
June 26-28	Motogator Joe's Country Music Festival
July 11-12	Railroad Days
July 31	Johnny Rogers Country Legends Concert
August 1	Johnny Rogers Rock & Roll Concert
August 2	22nd Annual Madison Car Show
August 27-30	53rd Annual Steam Threshing Jamboree featuring Ford-Ferguson Tractors, Trucks & Cars
Sept. 12	Cassie & the Bobs Patsy Cline Concert
Oct. 3	Pumpkin Train





Madison High School FFA – Save Our Family Youth Day



Dakota State University – Campus Green

East Dakota Transit

111 N. Van Eps Ave., Madison SD
256-6518 • www.eastdakotatransit.com

Evergreen Lodge / Twin-Lakes Shrine Club

820 Central Ave., Winfred SD 57076
485-2630 • www.mygrandlodge.org

Interlakes Area United Way

PO Box 132, Madison SD
256-6866 • www.interlakesunitedway.org

Inter-Lakes Community Action Partnership

111 N. Van Eps Ave., Madison SD
256-6518 • www.interlakescap.com

Izaak Walton League Chapter #16

PO Box 3, Madison SD
256-2824 – Reservations

Junior Achievement of Madison

PO Box 32, Madison SD
256-6536 • www.jasd.org

Karl Mundt Foundation

820 N. Washington Ave., Madison SD
256-5211 • mundt.dsu.edu

Lake Area Improvement Corporation

315 S. Egan Ave., Madison SD
256-0797 • www.madisonworks.com

Lake County Conservation District

123 S.W. 2nd St., Madison SD
256-2571

Lake County Offices & Services

200 E. Center St., Madison SD
256-7600 • www.lakecountysd.com

Lake Madison Development Association

46074 238th St., Wentworth SD 57075
256-2654

Madison Area Career Learning Center

223 S. Van Eps Ave. Suite 103, Madison SD
256-5320 • www.facebook.com

FULL RATE - \$400/person
1 overnight stay, 1 four bird hunt,
and three meals.

DAY RATE - \$150/person
1 three bird hunt.

TOP GUN
PHEASANT HUNTING RANCH LLC
Howard, South Dakota

Only 20 minutes from Madison!

Call 605-480-2356 Visit www.topgunhunt.com





Historic Prairie Village Steam Engine #29



Dakota State University - Annual Trojan Day Parade

Madison Housing & Redevelopment Comm.

111 S. Washington Ave., Madison SD
256-2112 • www.madisonhousingsd.com

Madison Kiwanis Club

PO Box 65, Madison SD
636-4506 • www.kiwanis.org

Madison Lions Club

PO Box 367, Madison SD
256-8030 • www.facebook.com

Madison Rotary Club

PO Box 233, Madison SD
256-6674 Ext. 2 • madisonsd.com/org/madison_rotary_club

SD Department of Labor & Regulation

223 S. Van Eps Ave. Suite 101, Madison SD
256-5300 • www.dol.sd.gov

Unless otherwise noted, all addresses are Madison, SD 57042 and area code is (605).

PROFESSIONAL SERVICES

Ellsworth Funeral Home

321 N. Egan Ave., Madison SD
256-2221 • www.ellsworthfh.com

Ericsson Law Office Prof. LLP

100 N. Egan Ave., Madison SD
256-4597

Issenhuth & Leibel, LLP

205 N. Egan Ave., Madison SD
256-9161

Jencks & Jencks, P.C.

121 N. Egan Ave., Madison SD
256-0121 • www.jenckslaw.com

Lammers & Kleibacker, LLP

108 N. Egan Ave., Madison SD
256-6677

Being there is why I'm here.

Whether you need a question answered, a problem solved, or a claim reported, my job is to make it happen. **Like a good neighbor, State Farm is there.* CALL ME TODAY.**



Randy Schaefer, Agent
730 South Washington Avenue
Madison, SD 57042
Bus: 605-256-2363
randy@randyschaefer.com



P097193.1 State Farm, Home Office, Bloomington, IL

Your leader in LOCAL COVERAGE




Madison Daily Leader
214 South Egan Avenue, Madison, SD
(605) 256-4555 • www.DailyLeaderExtra.com





Water Sports on Lake Madison



Baseball fans at Baughman/Belatti Park

Randall Funeral Home, Inc.

604 N. Highland Ave., Madison SD
256-0871 • www.randallfuneral.com

Weiland Funeral Chapel

320 N. Egan Ave., Madison SD
256-2870 • www.weilandfuneralchapel.com

You Can Too, Inc.

45622 241st St., Madison SD
270-1070

REALTY/RENTAL

Aspen Park Apartments

PO Box 253, Brandon SD 57005
360-8901

Exit Realty Advantage

1020 S. Union Ave., Madison SD
556-7500 • www.exitrealty.com

Kiropa Properties, LLC

PO Box 1741, Sioux Falls SD 57101
332-8532

Lakeview Realty, Inc.

100 Silvercreek Dr., Wentworth SD 57075
483-3322 • www.lakeviewrealty.org

Madison Realty, Inc.

121 S. Egan Ave., Madison SD
256-3888 • www.madisonsdrealty.com

Midwest Realty

417 S. Washington Ave., Madison SD
256-6921

Mills Property Management

1020 S. Union Ave. Suite 2, Madison SD
427-0190 • www.millsproperty.com

Sunset Harbor Condo Association

PO Box 2371, Sioux Falls SD 57101
231-1900

YOUR PARTY HEADQUARTERS!

Madison Discount Liquor

Local ZIP 57042

Madison Discount Liquor
123 NW 2nd Street, Madison, SD • 605-256-6870





2nd Street Diner



Hillside Resort on Lake Madison

RESTAURANTS

2nd Street Diner

610 S. Washington Ave., Madison SD
256-4441 • www.facebook.com

Aramark/DSU Dining Svc/Einstein Bro Bagel

820 N. Washington Ave., Madison SD • 256-7310
www.campusdish.com/en-US/CSMW/DakotaState

Broadwater Bar, The

6625 Wentworth Park Dr., Wentworth SD 57075
483-3525 • www.facebook.com

Country Café

119 1/2 S. Egan Ave., Madison SD
256-3730 • www.countrycafe.us

Dairy Queen

117 N.E. 2nd St., Madison SD
256-4042 • www.facebook.com/DQofMadison

El Vaquero Mexican Restaurant

316 N.E. 2nd St., Madison SD
427-0084 • www.facebook.com

Gary's Bakery & Café

115 N. Egan Ave., Madison SD
256-4445 • www.garysbakery.com



Lawrence Welk Opera House – Historic Prairie Village

Hillside Resort

46042 238th St., Wentworth SD 57075
256-9558 • www.hillsideresort.com

Lakes Bar & Grill, The

19A Golf Dr., Wentworth SD 57075
483-3580 • www.golfatthelakes.com

McDonald's Restaurant

320 N.W. 2nd St., Madison SD
256-6212 • www.mcdonalds.com/us/en/home.html

Mochavino, LLC

100 S. Egan Ave., Madison SD
556-1020 • www.madisonmochavino.com

Nicky's Restaurant & Lounge

1407 NW 2nd St., Madison SD
256-3791 • www.nickysrestaurant.com

Pizza Hut

222 N.W. 2nd St., Madison SD
256-9139 • www.pizzahut.com

Pizza Ranch of Madison

1111 N.W. 2nd St., Madison SD
256-3333 • www.pizzaranch.com

Pub House, The

200 S. Egan Ave., Madison SD
556-0288 • www.madisonpubhouse.com

Shipwreck Bar & Grill

23925 464th Ave., Chester SD 57016
489-2000 • www.shipwreckbarandgrill.com/index.html

Skipper's Italian Grill

204 S. Egan Ave., Madison SD
256-4986 • www.facebook.com

Sportsman's Steakhouse & Lounge

305 E. Center St., Madison SD
256-6376 • www.facebook.com

Stadium Sports Grill

203 N. Egan Ave., Madison SD
427-9521 • stadiumsportsgrillsd.com/madison.htm

SUBWAY

222 N. Washington Ave., Madison SD
256-0075 • www.subway.com

Taco John's

223 N. Josephine Ave., Madison SD
256-2587 • www.tacojohns.com

Teezers Bar

123 S.W. 1st St., Madison SD
256-4405 • www.facebook.com

Trolley's

201 S. Egan Ave., Madison SD
256-1549 • www.facebook.com





The Community Center

Providing Your Health and Wellness Needs!



Facility Features:

State of the Art Fitness Center
Indoor Heated Pool w/Zero Depth Entry
85ft Water Slide • Diving Boards
Outdoor Spray Ground • Sauna/Hot Tub
Indoor Track • Racquetball Courts
3 Full Court Gyms • Climbing Wall
Xtreme Fitness Arcade & DDR Pads

Daily Admission Fees:

Family \$18, Adult \$8, Senior \$6,
Youth (13-18) \$6, Child (3-12) \$3,
2 & under Free w/paid adult

ONE GREAT COMMUNITY, TWO GREAT POOLS

Madison Outdoor Aquatic Center

1000 NW 1st St - 256-7530
www.communitycenter.dsu.edu

Facility Features:

7500sf Aquatic Center • Zero Depth Entry
Water Play Features • Otter (kids) Slide
185ft Flume Slide • 22ft Water Walk
Geysers • Diving Board
Sand Play Area • Sun Turf

Daily Admission Fees:

Individual \$4, Infant (1&under) \$1,
Observation area for non-paying guests

If Madison Outdoor Aquatic Center closes due to weather paid guests may use the Community Center Indoor Pool for the day!





Chamber Halloween Trick or Treat



The Broadwater Bar boat docks and fuel - Lake Madison

RETAIL

4 Seasons Flea Market & Boutique

223 N. Egan Ave., Madison SD
256-6696 • www.4seasonsfleamarket.com

B&B Appliance

117 S. Egan Ave., Madison SD
256-2481

Campbell Supply Co.

535 N.E. 3rd St., Madison SD
256-4545 • www.campbellsupply.net

Casey's General Store

400 S. Washington Ave., Madison SD
256-3013 • www.caseys.com

Central Business Supply Co.

115 S. Egan Ave., Madison SD
256-6637 • www.centralbusinesssupply.com

Century Business Products

115 S. Egan Ave., Madison SD
556-2100 • www.cbpic.biz/

Classic Corner

500 S.E. 10th St., Madison SD
256-0338 • www.facebook.com/classic.corner.conv

E-Cig Lounge

102 S. Egan Ave., Madison SD
291-6583

ENCORE Family Store

209 S. Egan Ave., Madison SD
556-3100 • www.encorefamilystore.com

Gaylen's Homegrown Popcorn

23546 462 Ave., Wentworth SD 57075
483-3324 • www.gaylenspopcorn.com

Grapevines Gifts

113 N. Egan Ave., Madison SD
256-6671

It's a



Family



Thing



Loans - Checking - Savings - Online Banking & More!

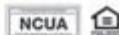


EAST RIVER

FEDERAL CREDIT UNION

www.EastRiverFCU.com • (605) 256-8145

  @EastRiverFCU





Outlaw Ice Races at Brant Lake



Pheasant Hunting in Lake & Miner Counties

Jack's "The Meat Store" Cold Storage

208 S.W. 1st St., Madison SD
256-2556 • www.facebook.com

Johnson Jewelers, Inc.

108 E. Center St., Madison SD
256-4725

KolorWorks Paint & Decorating

220 N. Washington Ave., Madison SD
256-9420 • www.facebook.com

Lakebrook TV & Appliance, LLC

221 S. Egan Ave., Madison SD
256-2752

Lewis

741 S. Washington Ave., Madison SD
256-3733 • www.lewisdrug.com

Madison Ace Hardware

400 S. Egan Ave., Madison SD
256-3981 • www.acehardware.com

Madison Discount Liquor

123 N.W. 2nd St., Madison SD
256-6870 • www.facebook.com/MadisonDiscountLiquor

Madison Instant Printing, LLC

109 N. Egan Ave., Madison SD
256-4002

Madison Nursery & Landscape

45493 234th St., Madison SD
256-4112 • www.facebook.com

Montgomery's

747 S. Washington Ave., Madison SD
256-4000 • www.montgomerysfurniture.com

One Stop

1104 N.W. 2nd St., Madison SD
256-9711 • www.onestopmadison.com

Outer World Screen & Sign

120 S. Highland Ave., Madison SD
256-3157

CHALLENGING GOLF COURSE.
THE DIVERSITY OF THE ONLY
LOCAL 18-HOLE LAYOUT MAKES
IT A FAVORITE.

Golf

Where Madison comes to play!

Bring this ad in and get
10% Off Greens Fees
for up to 4 players

Madison Country Club

45152 233rd Street • 605-256-3991
North shore of Lake Herman
www.madisongolf.com





Sunset at Lake Herman



Area Lakes – Lake Madison boating

Pampered Chef, The – Rita Feldhaus

22405 448th Ave., Ramona SD 57054
482-8219 • www.pamperedchef.biz/RitaFeldhaus

Pawn Shop/Surplus Store

118 N.W. 2nd St., Madison SD
256-9757 • www.facebook.com

Power Promotions

112 N. Egan Ave., Madison SD
256-2049 • www.poweronup.com

Probuild

401 S. Washington Ave., Madison SD
256-4529 • www.probuild.com

Sample Our Flowers

320 N. Washington Ave., Madison SD
256-4534 • www.sampleourflowers.com

Scooby's Convenience

320 N.E. 2nd St., Madison SD
743-5844

Shepherd Shop, The

107 N. Egan Ave., Madison SD
256-9594

Shopko

800 S. Washington Ave., Madison SD
256-6641 • www.shopkohometown.com

Stan's Men's & Women's Apparel

105 N. Egan Ave., Madison SD
256-2728 • www.stansapparel.com

Sunshine Foods

215 N. Van Eps Ave., Madison SD
256-3541 • madison.sunshinefoodstores.com

Tom's Photographic

919 N.E. 9th St., Madison SD
256-2975 • www.tlkphoto.com

Unique Boutique Consignment, LLC

1229 N.W. 2nd St., Madison SD • 427-0707
www.facebook.com/UniqueBoutiqueConsignment

*Daily Specials • Homemade Pies & Soup
Old-fashioned Milkshakes • Sunday Brunch Buffet*

Friendly 50's Atmosphere
Open 6AM, 7 Days a Week



Private Meeting Room • High Speed Wireless Internet

610 S. Washington Avenue • 605-256-4441





3K O'Fun Run – The Pub House



Madison Central Bulldog



Fall at Lake Herman State Park

Urban Junk, etc.

217 N. Egan Ave., Madison SD
270-4344 • www.facebook.com

A1 Travel SD, LLC

118 W. Center St., Madison SD
556-0025 • www.a1travelsd.com

Affordable Websites for Small Business

6751 Wicklow Hills Ln., Wentworth SD 57075
291-9122 • www.affordablewebsitesforsmallbusiness.com

Always Tan

222 S. Egan Ave., Madison SD
256-3052 • www.facebook.com

Bessman Auction & Clerking Services, LLC

PO Box 52, Madison SD
256-4980 • www.bessmanauctions.com

Bud's Clean Up Service

22925 455th Ave., Madison SD
256-2518 • www.budscleanup.com

Bulldog Media Group, Inc.

114 N. Egan Ave., Madison SD
256-9103 • www.bulldogmediagroup.com

Celtic Clippers Pet Stylist

211 S.W. 1st St., Madison SD
951-7689 • www.celticclippers.com

Christiansen Complete Water

302 S. Egan Ave., Madison SD
256-4747 • www.christiansencompletewatersd.com

CJ's Salon and More

102 S. Egan Ave., Madison SD
427-2626 • www.facebook.com/cjssalonandmore

Culligan Water Conditioning

1510 W. 51st St., Sioux Falls SD 57105
556-0097 • www.siouxfallsculligan.com

SERVICES

**YOU BELONG AT
Camp Lakodia**

Weddings • Retreats • Conferences • Reunions

A wholly owned subsidiary of Fostering Hope, Camp Lakodia is a natural sanctuary open year-round just west of Madison, SD on beautiful Lake Herman.

We feature dining/meeting facilities for up to 225, a magnificent two-story lodge that sleeps 18, six modern cabins with a view of the lake, 10 electric campsites, canoes, kayaks, paddleboats, and a pontoon boat ... everything you need to make beautiful memories with family, friends or co-workers!



Just west of Madison | www.CampLakodia.org | 1-877-LAKODIA





Water Recreation on Lake Madison



Historic Prairie Village – Northern Bull Ride in June

Custom Holiday Illumination

135 W. Brian St., Tea SD 57064
595-3560 • www.customholidayillumination.com

Dar's Salon of Hair Design

119 S. Egan Ave., Madison SD
256-4239

Econowash Laundromat & Dry Cleaning

221 S. Egan Ave., Madison SD
256-4937

Gary's Specialties – Lock & Key

45904 Sharon Ln., Wentworth SD 57075
256-6160

Home Cleaning Service

PO Box 173, Madison SD
256-3360

Home Service Water Conditioning

411 S.E. 8th St., Madison SD
256-3688

Intuvio Solutions

700 S. Washington Ave., Madison SD
759-7346 • www.intuviosolutions.com

Janssen's Moving

318 N. Chicago Ave., Madison SD
256-3566

Josh and Pam's Photography and Computer Repair

114 E. Center St., Madison SD
480-2157 • www.joshandpams.com

Lake-Side Limo

104 Round Lake Hills Dr., Wentworth SD 57075
480-2662 • www.lake-sidelimo.com

LakeView Lawn Care

PO Box 463, Madison SD
270-1323

Lakeview Runners

PO Box 295, Madison SD
256-2172



Real Estate Reinvented!

Expertise

Our associates are highly trained and knowledgeable in the Madison area.

Experience

In today's market, experience, patience and perseverance are more important than ever.

EXceeding Your EXpectations

In the end, it's results that matter.

EXIT REALTY ADVANTAGE

1020 S. Union Ave., Madison, SD
(605) 556-7500

www.MadisonSDHomes.com

Friendly, Fresh, and Fast!

- Fresh Produce
- Fresh Meat
- Bakery
- Floral
- Deli

605.256.3541
215 N. Van Eps Ave.
Madison, SD 57042





Dakota State University – late Summer color



Dakota State University – Trojan Football

Madison Airport / Riggin Flight Services

1611 Aviation Way, Madison SD
256-7524 • www.cityofmadisonsd.com

Madison Arbor Care, Inc.

PO Box 527, Madison SD
427-8733 • www.madisonarborcare.com

Madison Lawn Care

212 SE 3rd St, Madison SD
556-2121 • www.madison-lawns.com

Merle's Steam Clean Carpet Services, Inc.

P.O. Box 181, Madison SD
256-4272 • www.facebook.com/merlessteamclean

Outdoor Innovation Landscapes

116 N. Garfield Ave., Madison SD
480-1496 • www.facebook.com/oi.landscapes

Q-Set, Inc.

613 N. Washington Ave, Madison SD
270-4100 • www.q-set.com

SafeGuard Home Inspections

704 N.W. 8th St., Madison SD
480-0997 • www.homeinspectionsbyloren.com

Secure Banking Solutions

700 S. Washington Ave. Suite 200, Madison SD
270-9854 • www.protectmybank.com

Silver Creek Productions

107 E. Center St., Madison SD
256-0940 • www.facebook.com

South Dakota Retailers Association (Lake County)

320 East Capitol, Pierre SD 57501
254-1091 • www.sdra.org

Super Wash

304 N.E. 2nd St., Madison SD
256-3723 • www.superwash.com/home1/home.html

Tom's Lock & Key

1421 N.E. 5th St., Madison SD
480-2987

**Proudly serving the great city of Madison
and surrounding communities for over 50 Years!**



**Children's
Miracle Network**

#1 in the nation for top blizzard sales
on Miracle Treat Day 9 years in a row!

**Hwy 34 • Madison, SD
(605) 256-4042**





Hobo Marlin's Pumpkin Train



"Fun at the Lake" – Lake Madison, Herman & Brant

Twin Lakes Animal Clinic
45305 SD Hwy 34, Madison SD
256-0123

UPS
1 Weather Lane, Sioux Falls SD 57104
359-6899 • www.ups.com

Your Peace of Mind Home Inspections
517 N.W. 8th St., Madison SD
530-4685 • www.yourpeaceofmindhomeinspections.com

TELECOMMUNICATIONS

ELBO Computing Resources
PO Box 1632, Sioux Falls SD 57101
427-3282 • www.elbo.net

Infotech Solutions, LLC
700 S. Washington Ave., Madison SD
427-0555 • www.infotechsd.com

Interlakes Wireless
524 N. Kansas Ave, Madison SD
480-0299 • interlakeswireless.com

Midcontinent Communications
3901 N. Louise Ave., Sioux Falls SD 57107
357-5491 • www.midcoomm.com

Pro Cellular Wireless
107 S. Egan Ave., Madison SD
256-0088 • www.procellular.net

Vast Broadband
106 N. Egan Ave., Madison SD
427-7455 • vast.rlci.com

Wireless World
722 S. Washington Ave., Madison SD
256-9722 • www.wirelessworldus.com

Unless otherwise noted, all addresses are Madison, SD 57042 and area code is (605).

July 4th on Lake Madison



Over 40 majors enhanced with technology.



At Dakota State University, we offer over 40 majors with a technological edge. Whether you are searching for a certificate, associate, bachelor's, master's or doctoral program, we have options for you to enhance your future.

We also make getting your degree more convenient with options to take classes:



▶ On-campus, in Madison



▶ At University Center - Sioux Falls



▶ Online, wherever you are



DSU
DAKOTA STATE

TECHNICALLY, WE'RE BETTER.

Madison, SD | dsu.edu



PROSTROLLO

ALL AMERICAN AUTO MALL



Ten Franchises

450
new & used
VEHICLES
TO CHOOSE FROM



One of South Dakota's
Largest Dealerships!

Sales • Service • Parts • Collision Center

PROSTROLLO

Since 1957

automall.com

Madison, SD • 605-256-9111 • 1-800-777-4146

